

## **CONVEGNO NAZIONALE 2014**

### **I risultati della survey 2012**

### **Prima parte: estensione e adesione**

***Cinzia Campari – Azienda USL di Reggio Emilia***

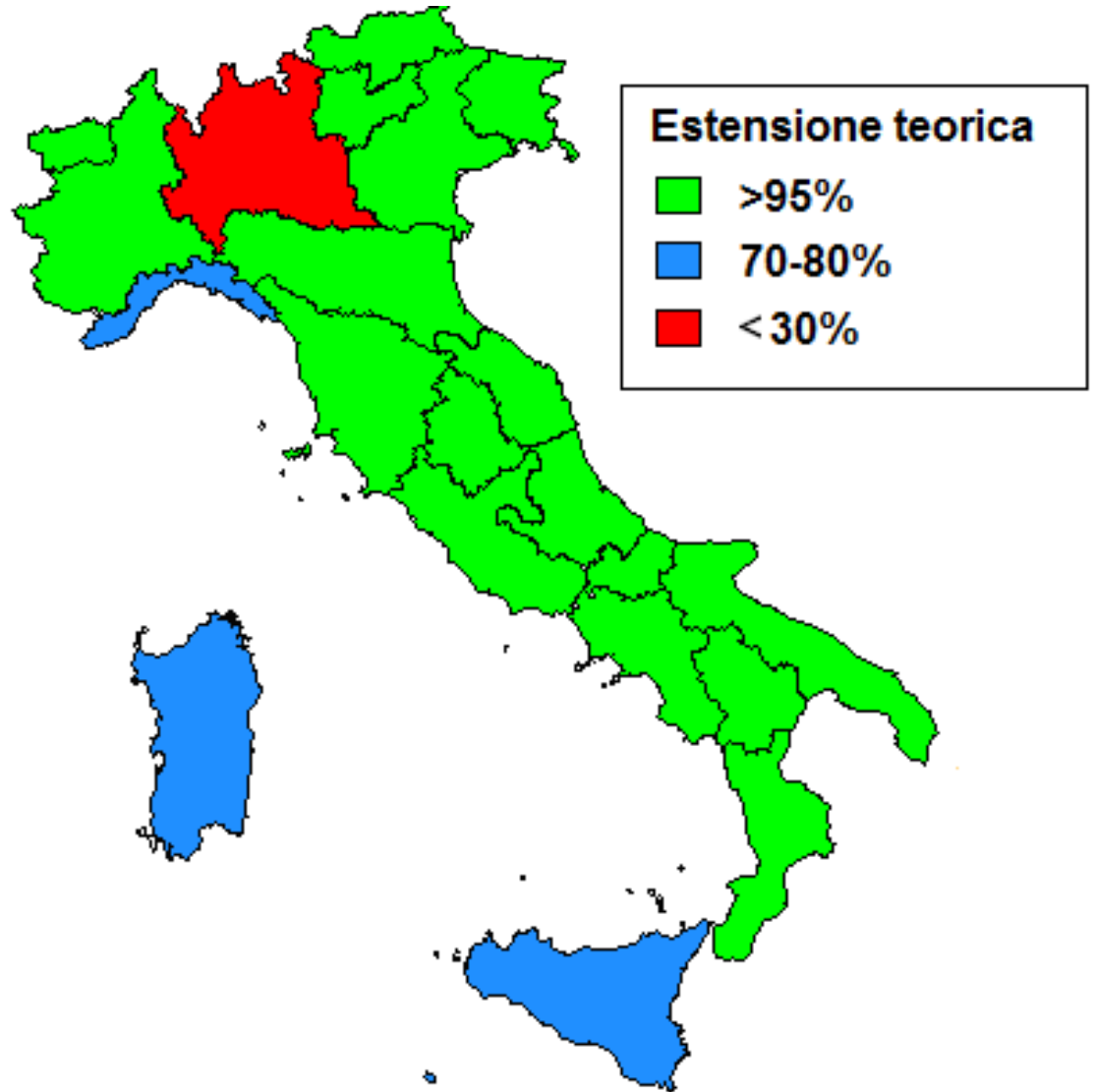
***Manuel Zorzi – Registro Tumori del Veneto***

# Programmi di screening cervicale - 2012

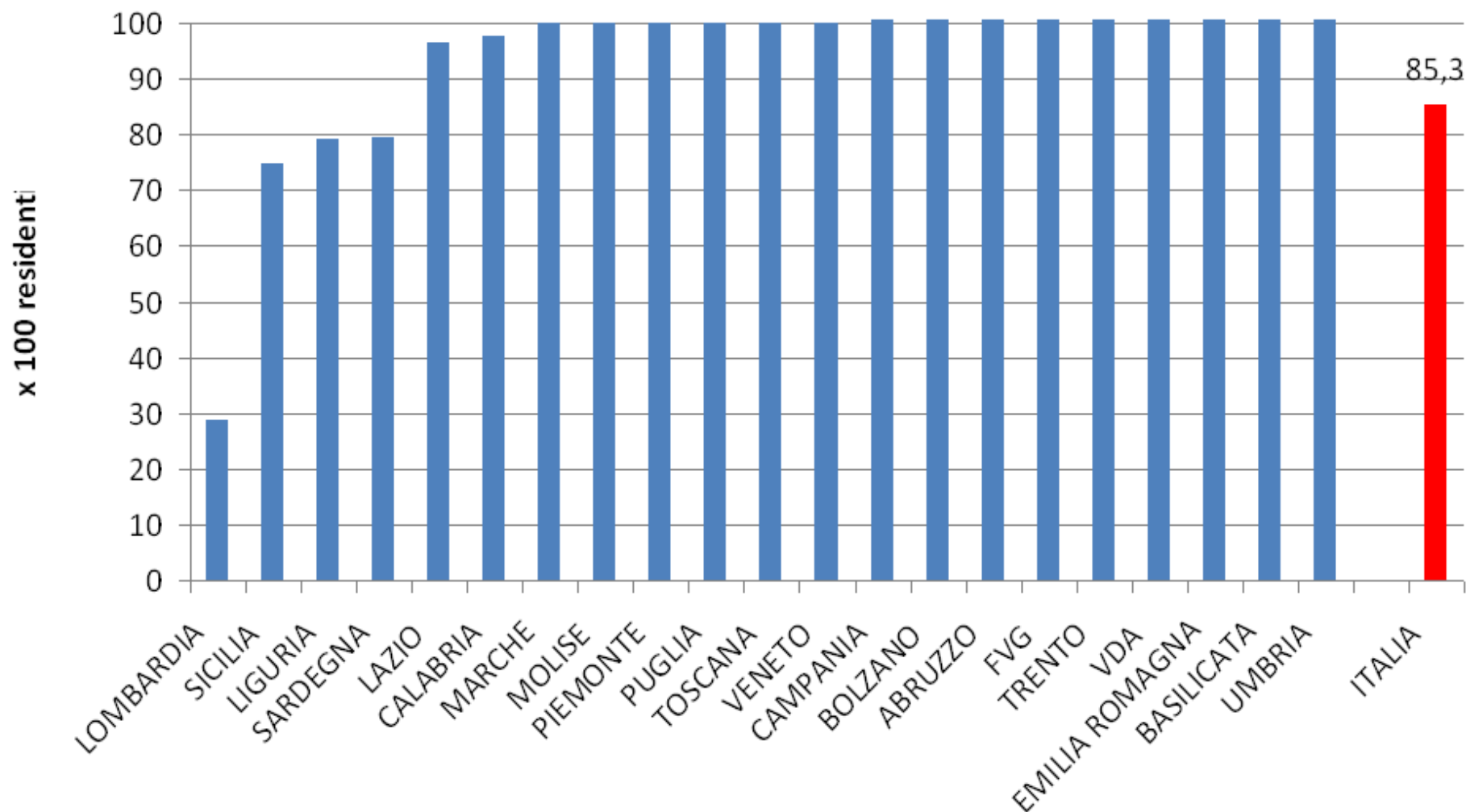
Popolazione  
femminile italiana  
25-64 anni:  
**16.600.000**

Popolazione  
interessata:  
**85,3%**

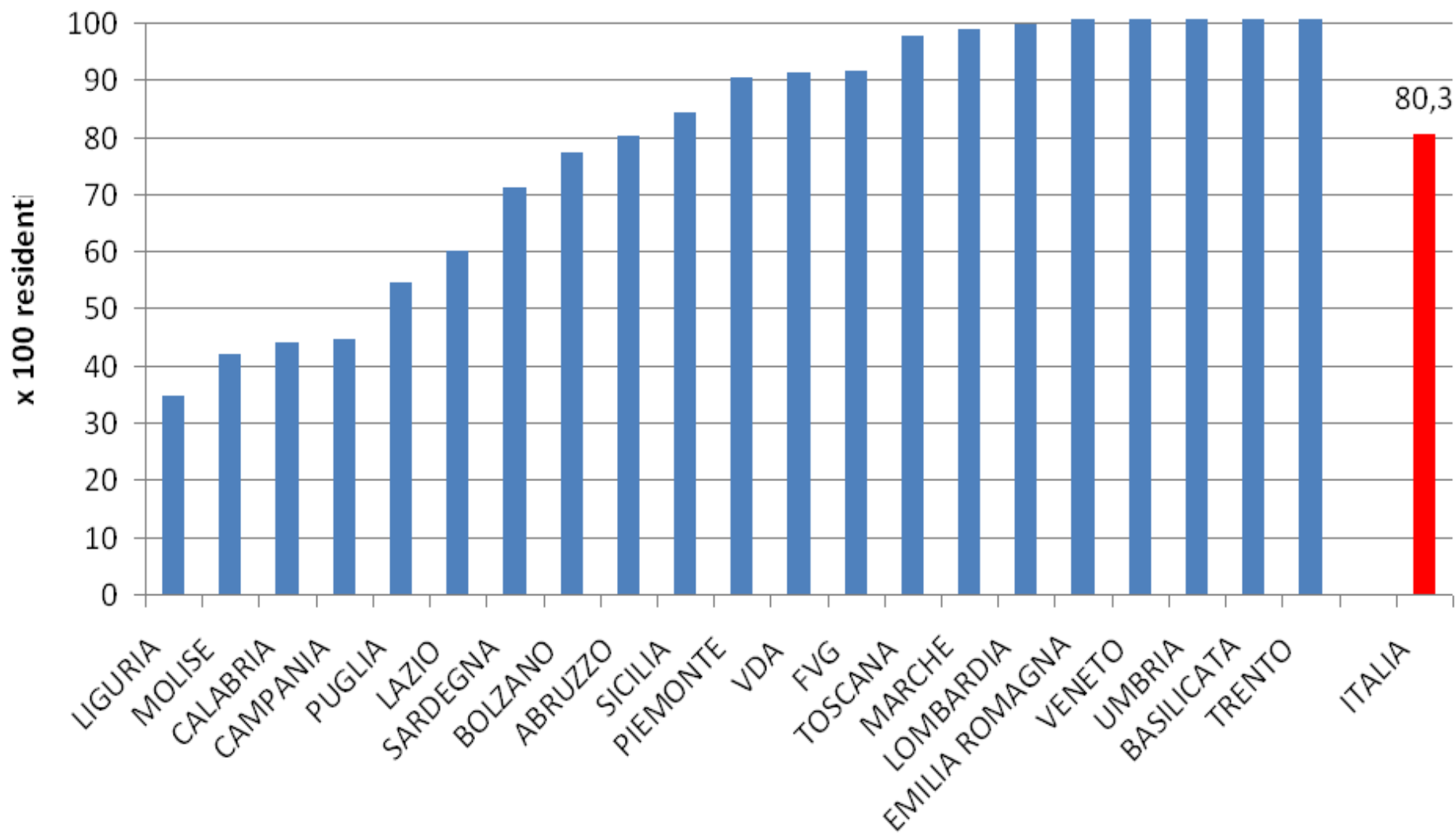
Numero  
programmi attivi:  
**116**



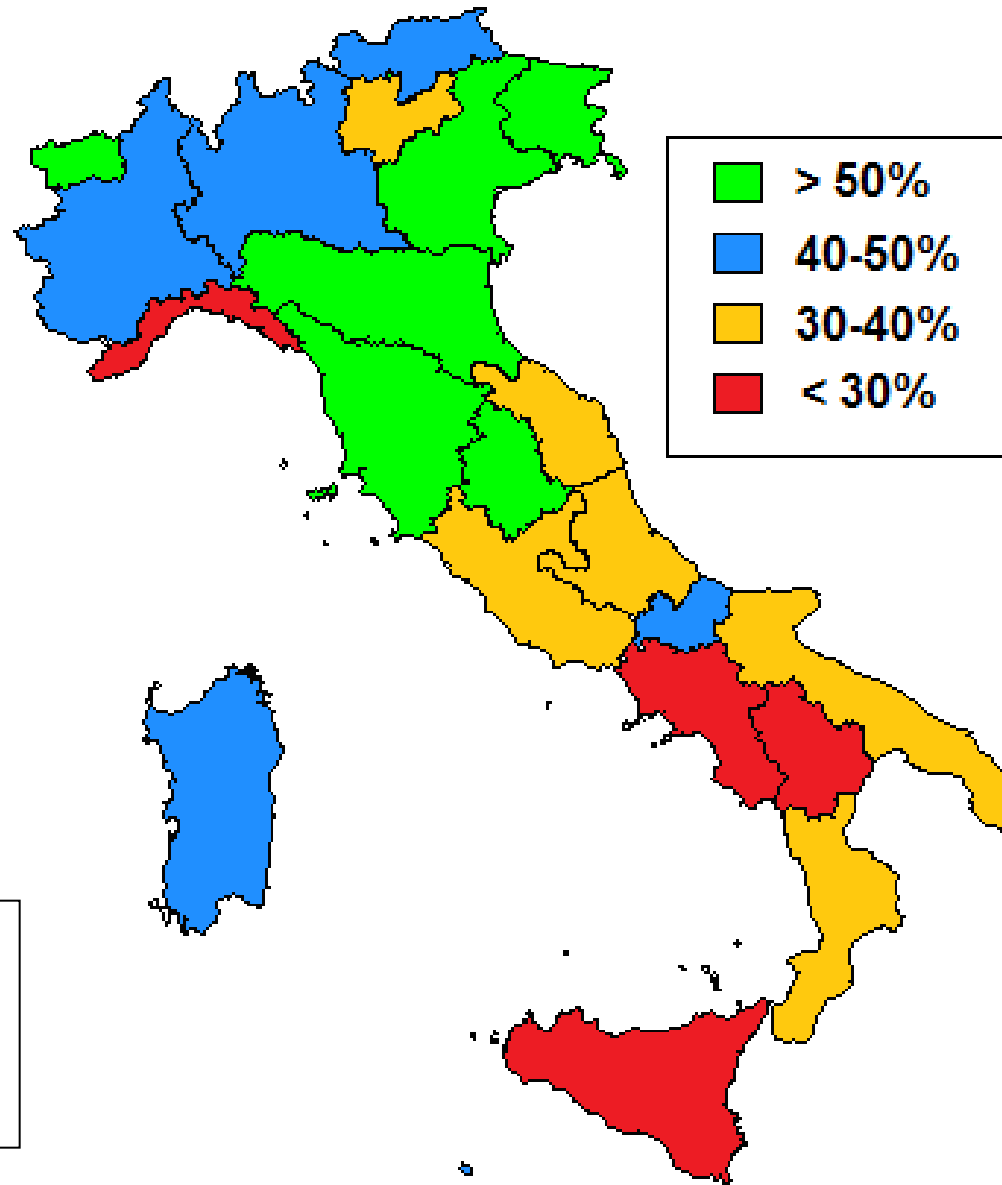
## Estensione teorica 2012



## Estensione effettiva corretta 2012



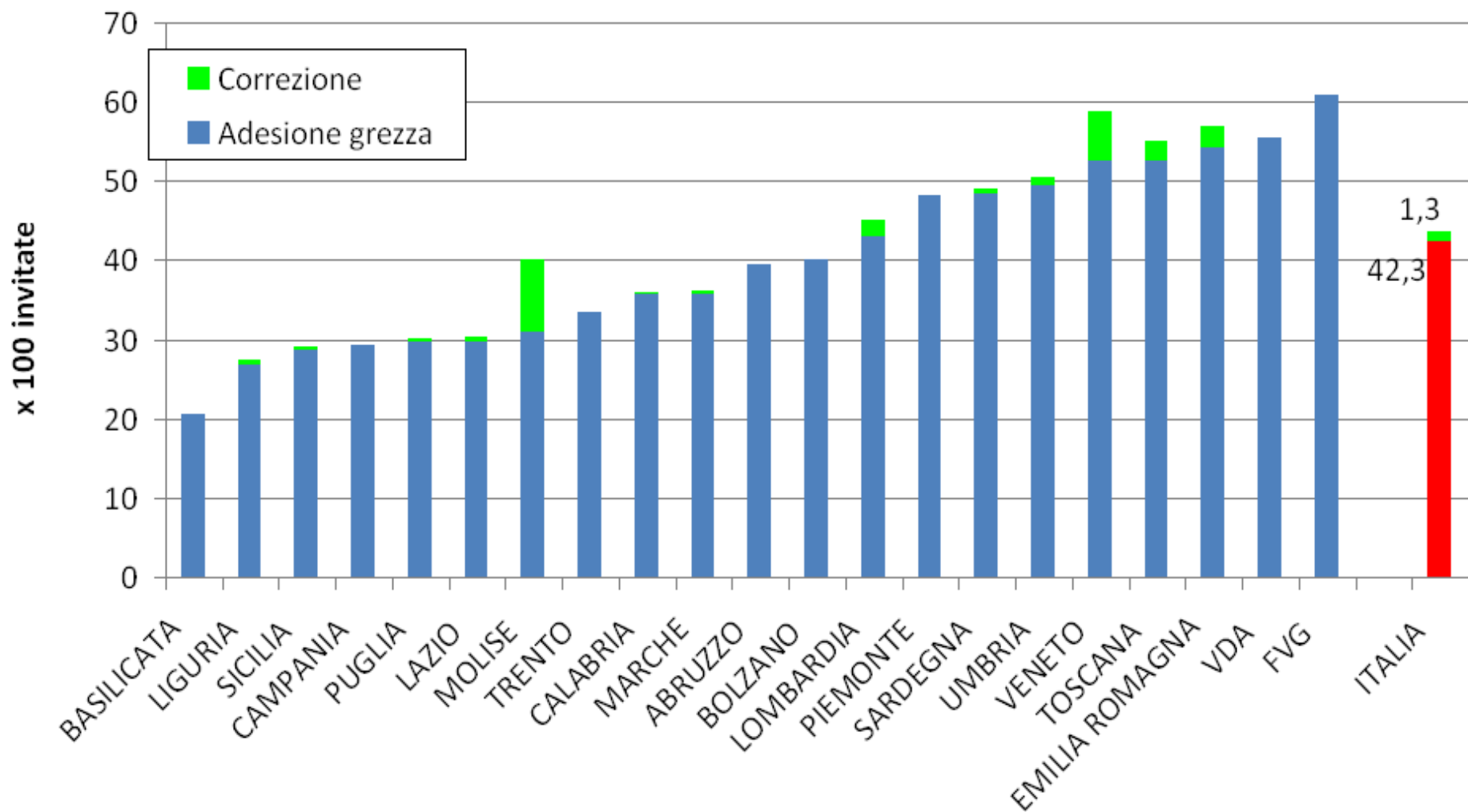
# Adesione corretta all'invito - 2012



ITALIA 2012

**43,6%**

## Adesione corretta 2012



# Adesione per singola survey - 2012

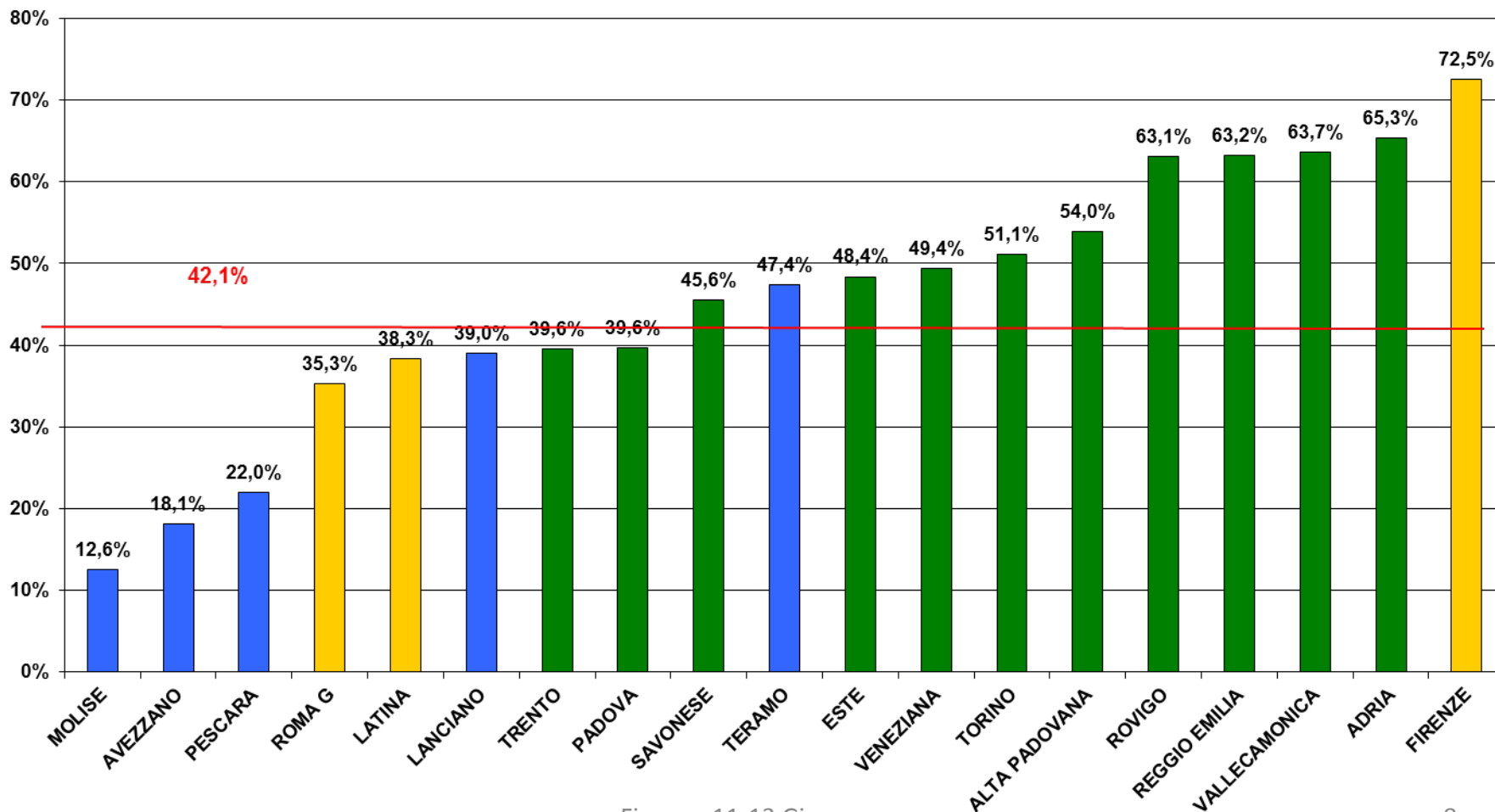


# Adesione al test HPV

Invitate:  
**312.000**

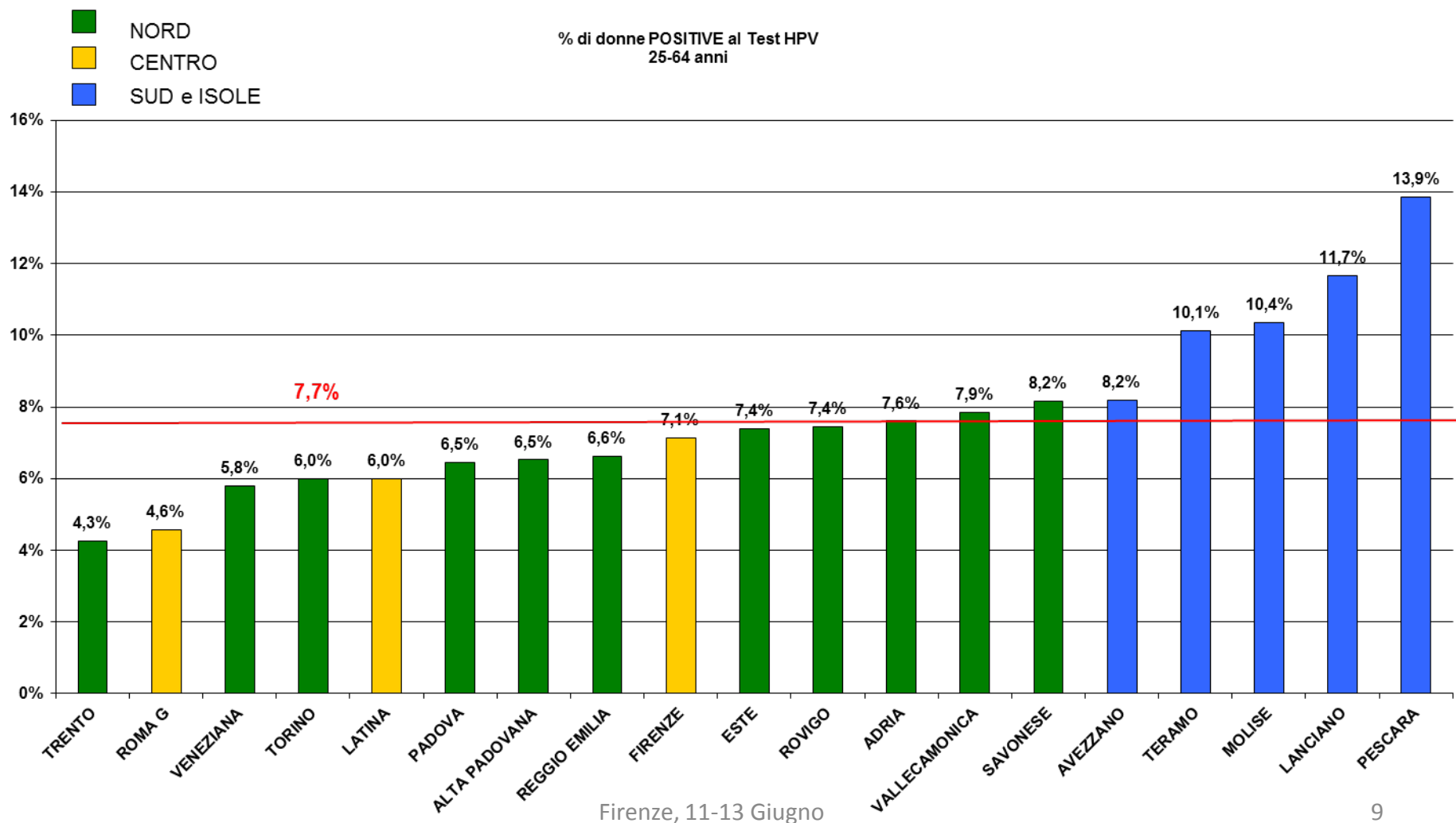
- NORD
- CENTRO
- SUD e ISOLE

Adesione all'invito con test HPV come test primario  
(25-64 anni)





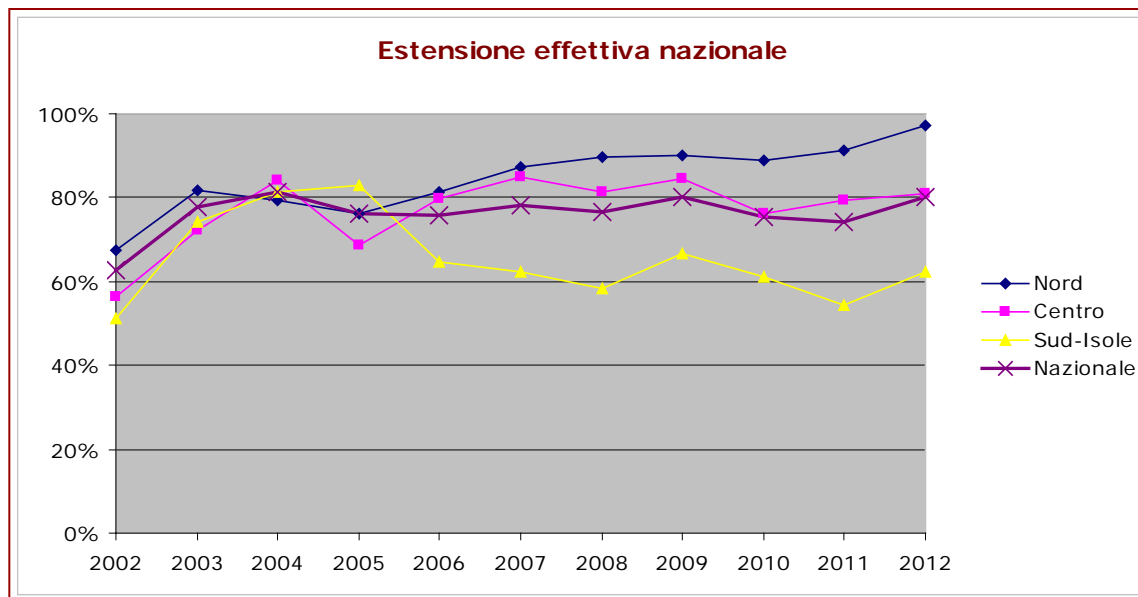
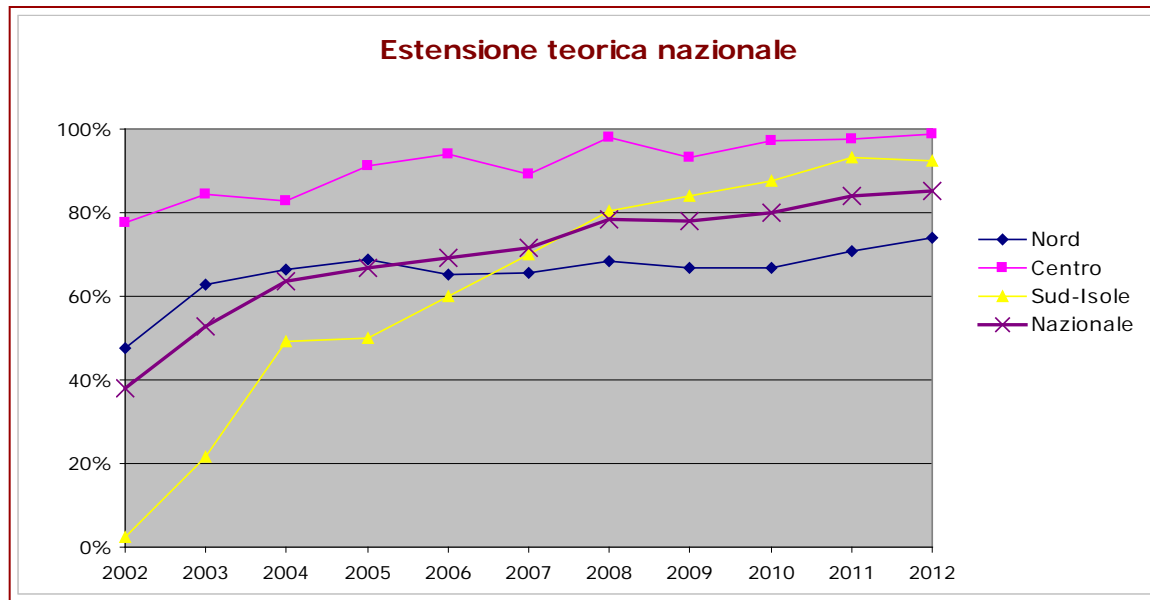
# Positività al test HPV



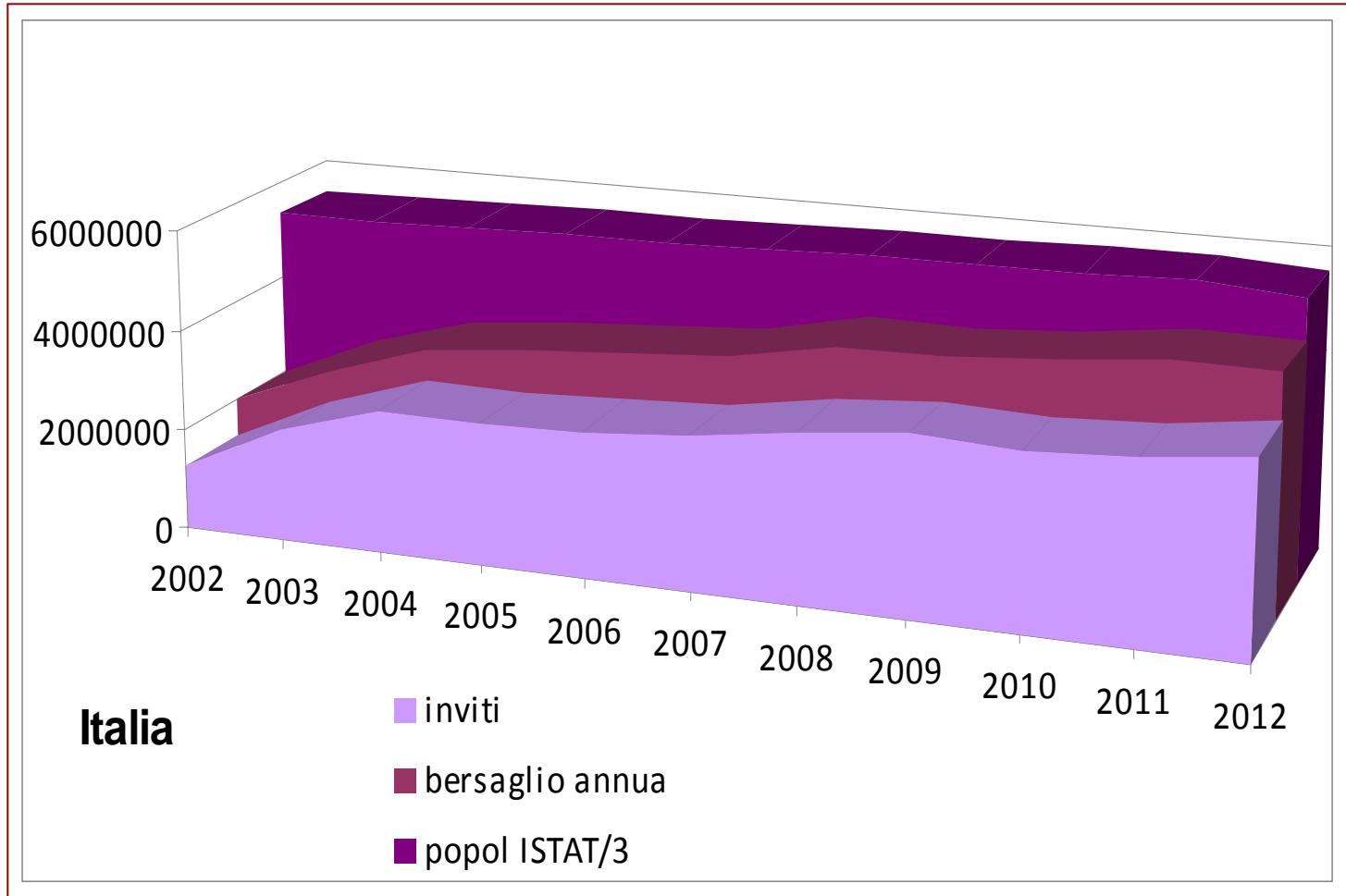
# **Analisi dei trend 2002-2012**

## **Prima parte: estensione e adesione**

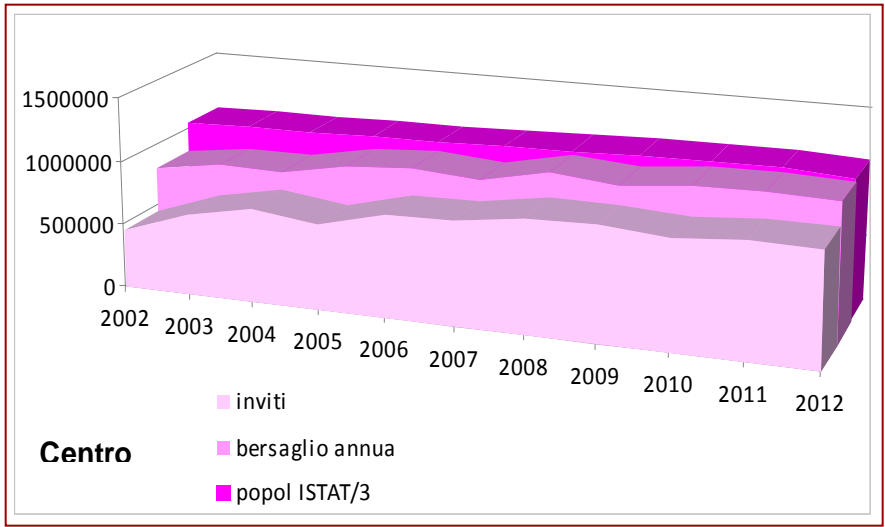
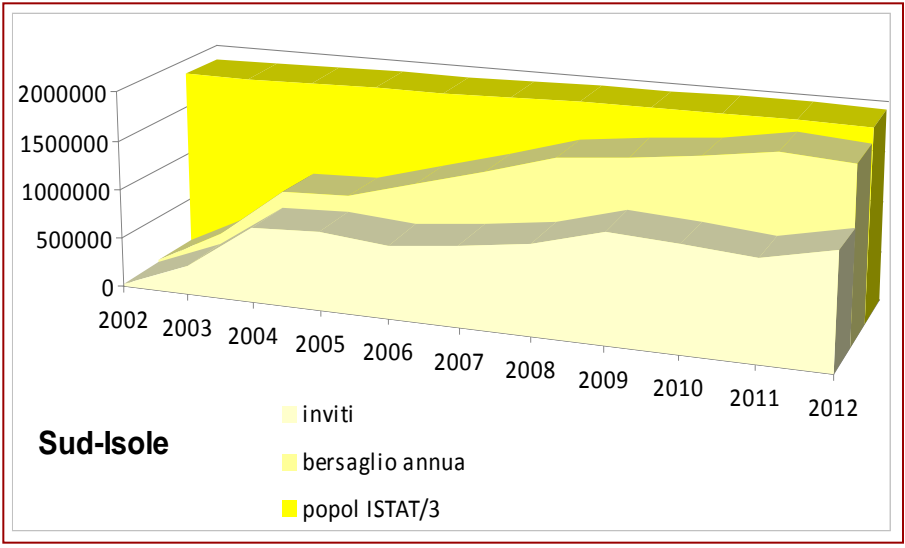
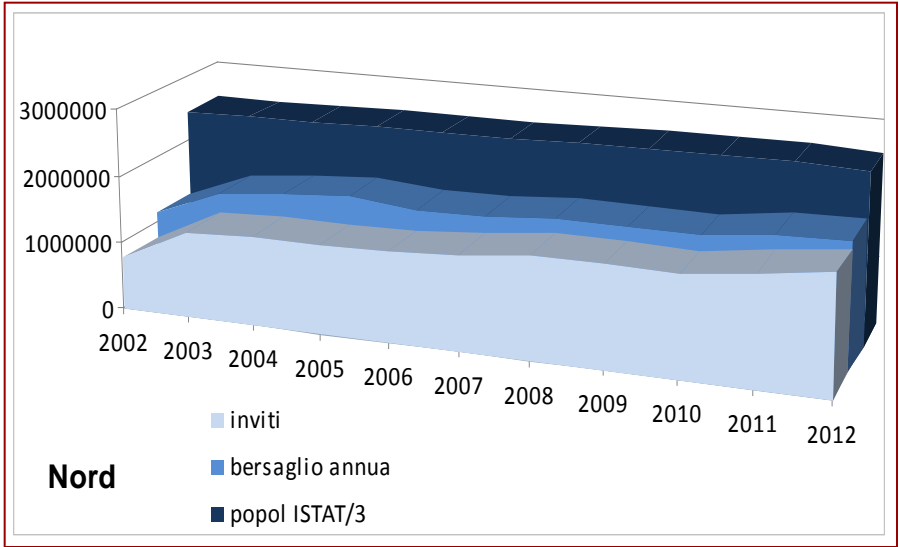
# Estensione per macroarea



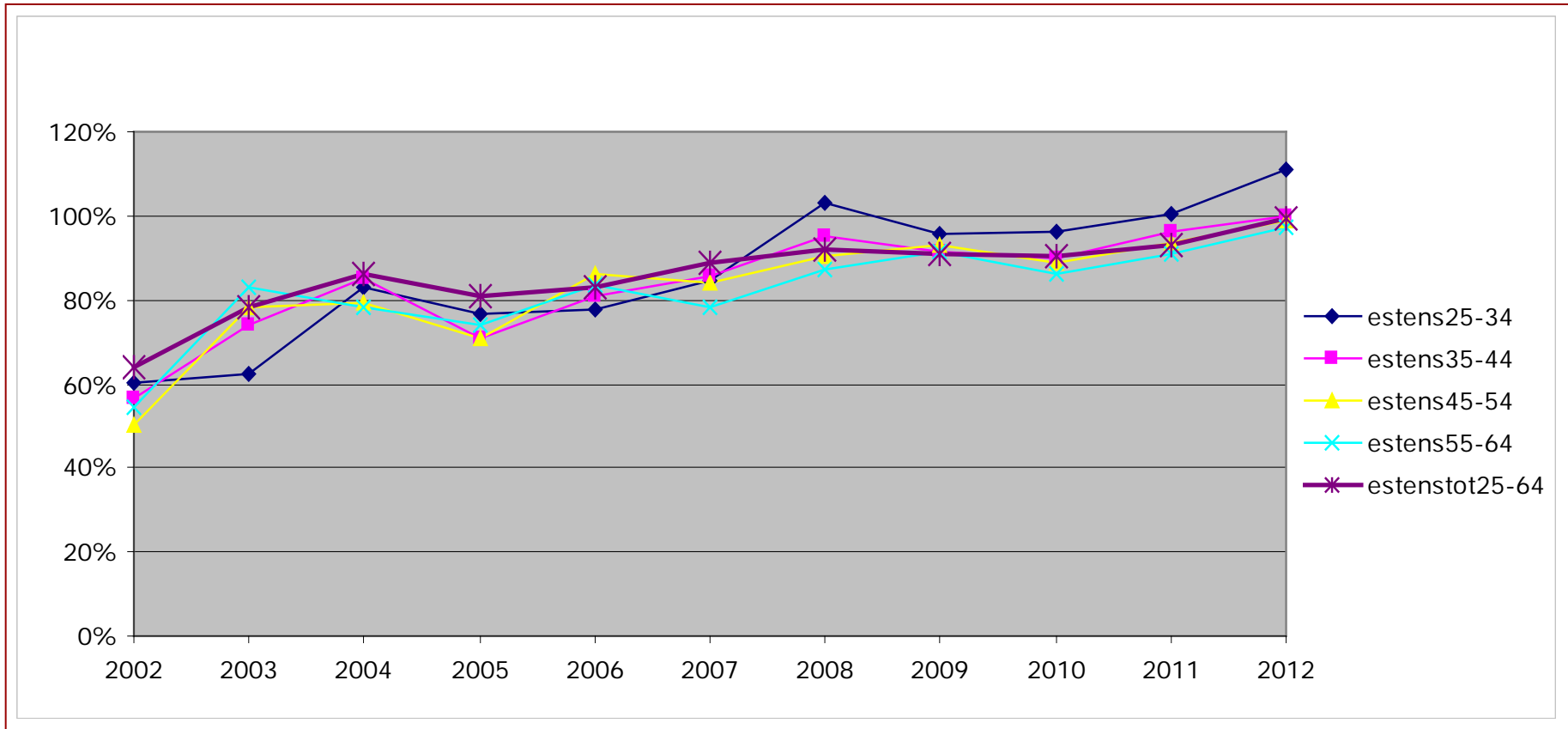
# Estensione effettiva corretta nazionale



# Estensione effettiva corretta per macroarea

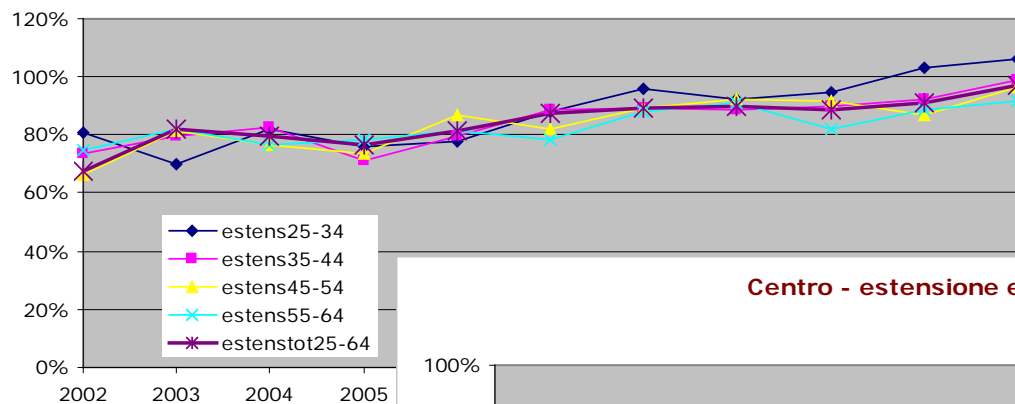


# Estensione effettiva corretta, per età

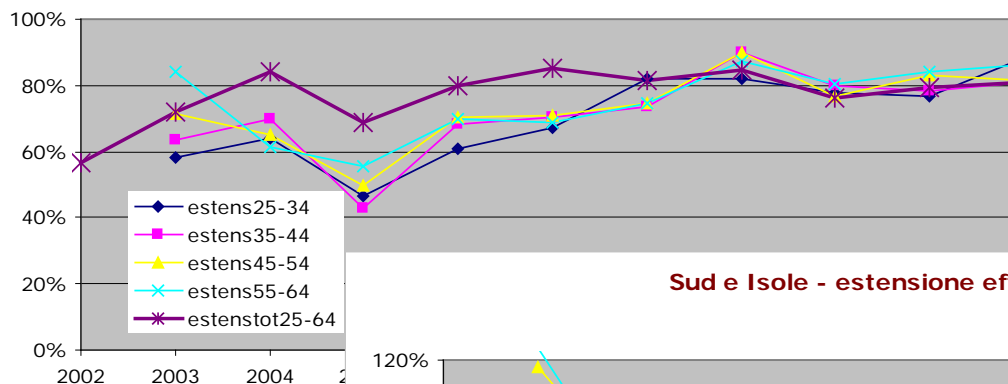


# Estensione effettiva corretta, per età e macroarea

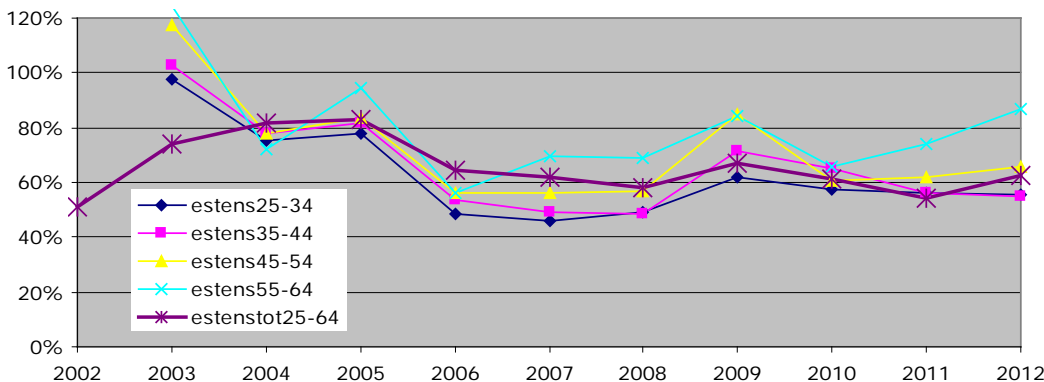
**Nord - estensione effettiva**



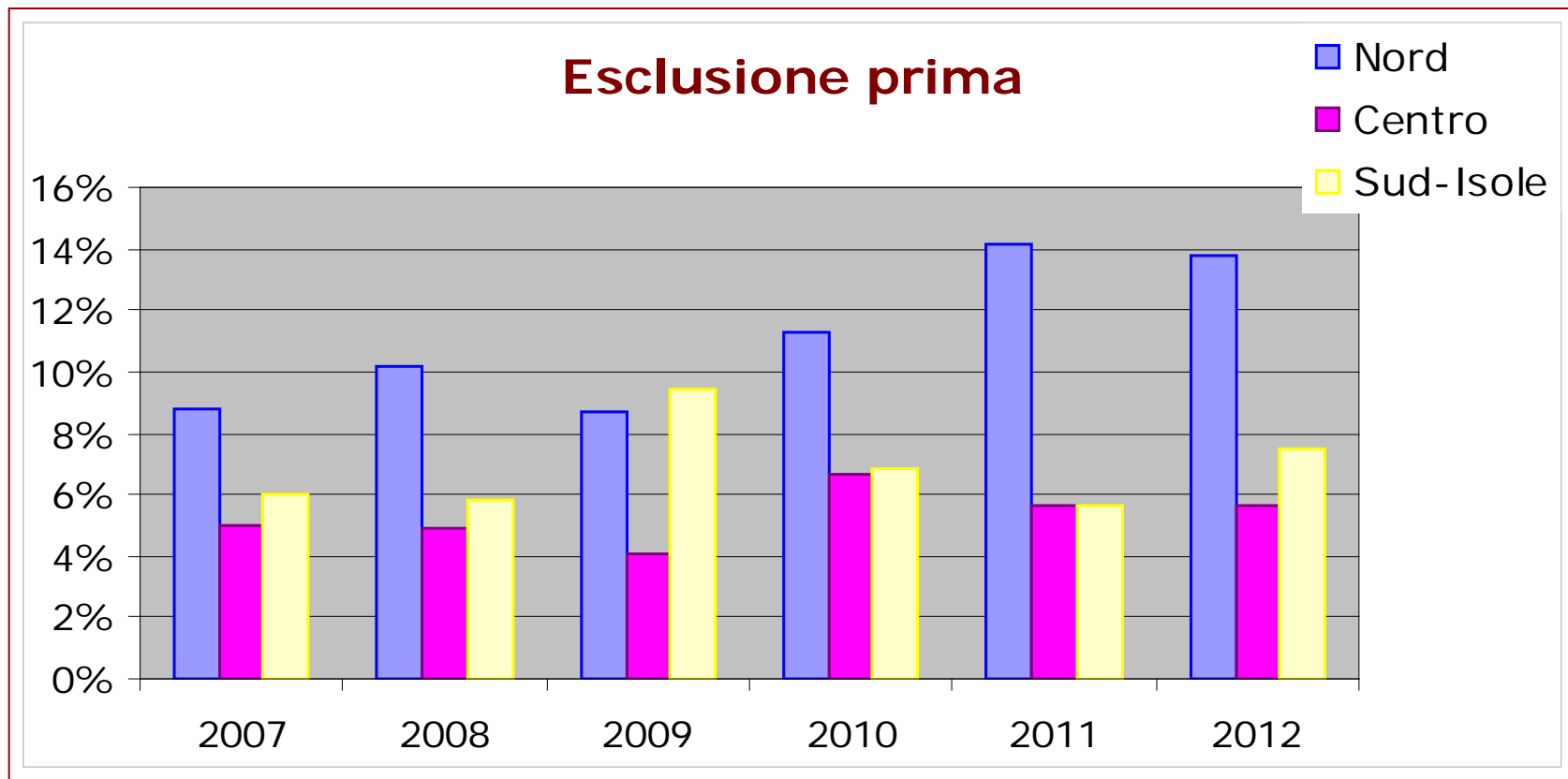
**Centro - estensione effettiva**



**Sud e Isole - estensione effettiva**

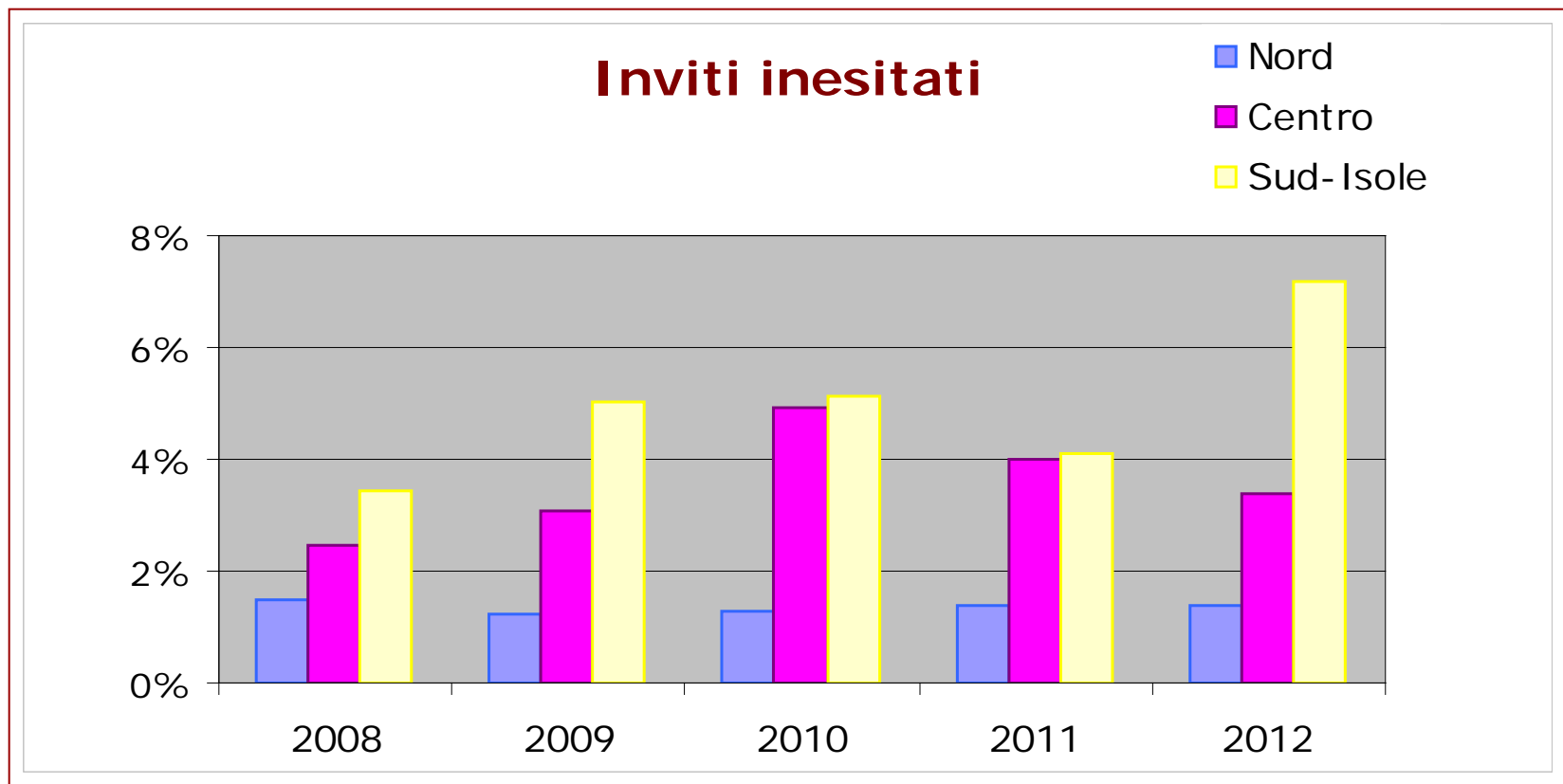


# Integrazioni con altri archivi

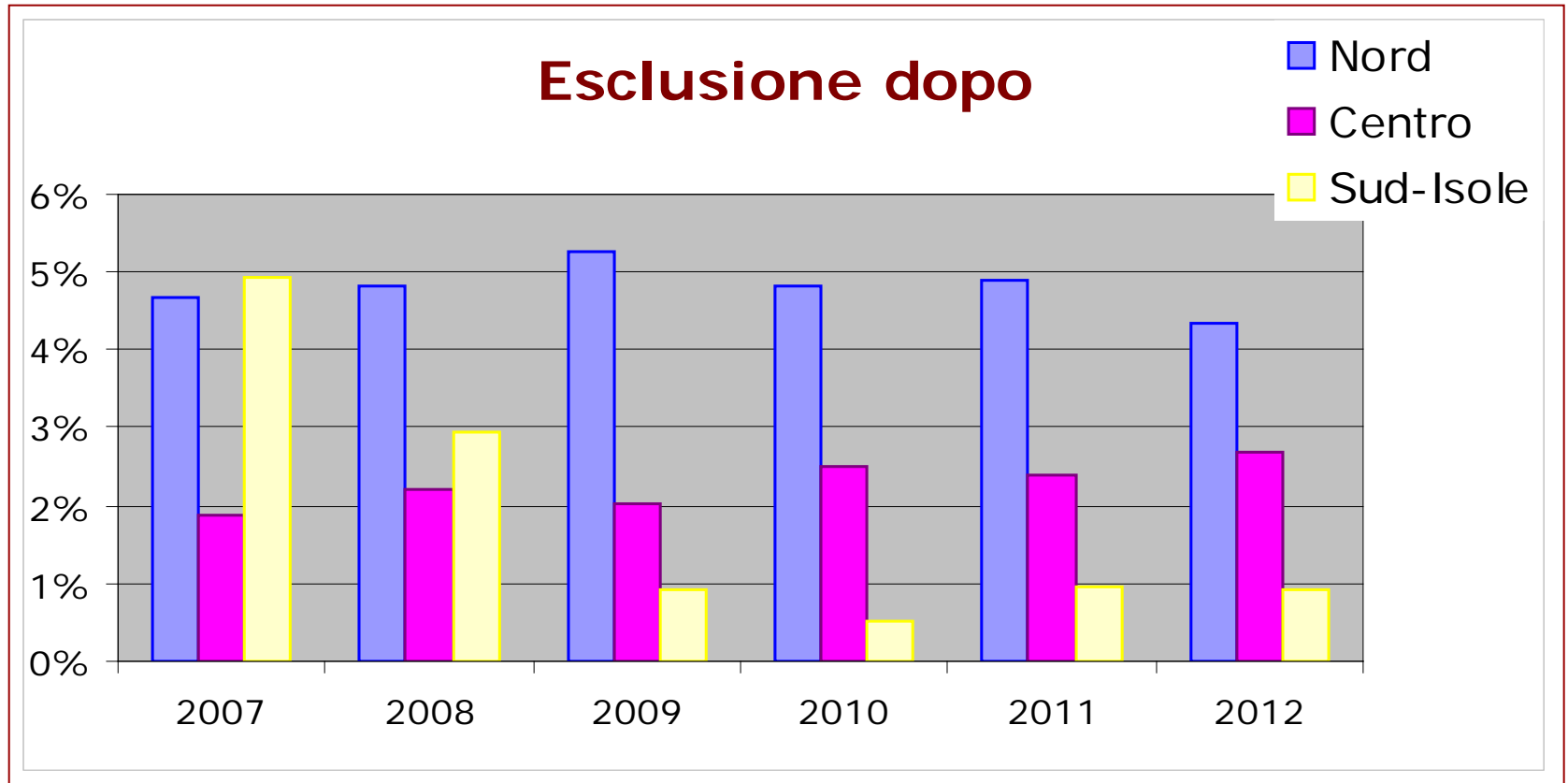




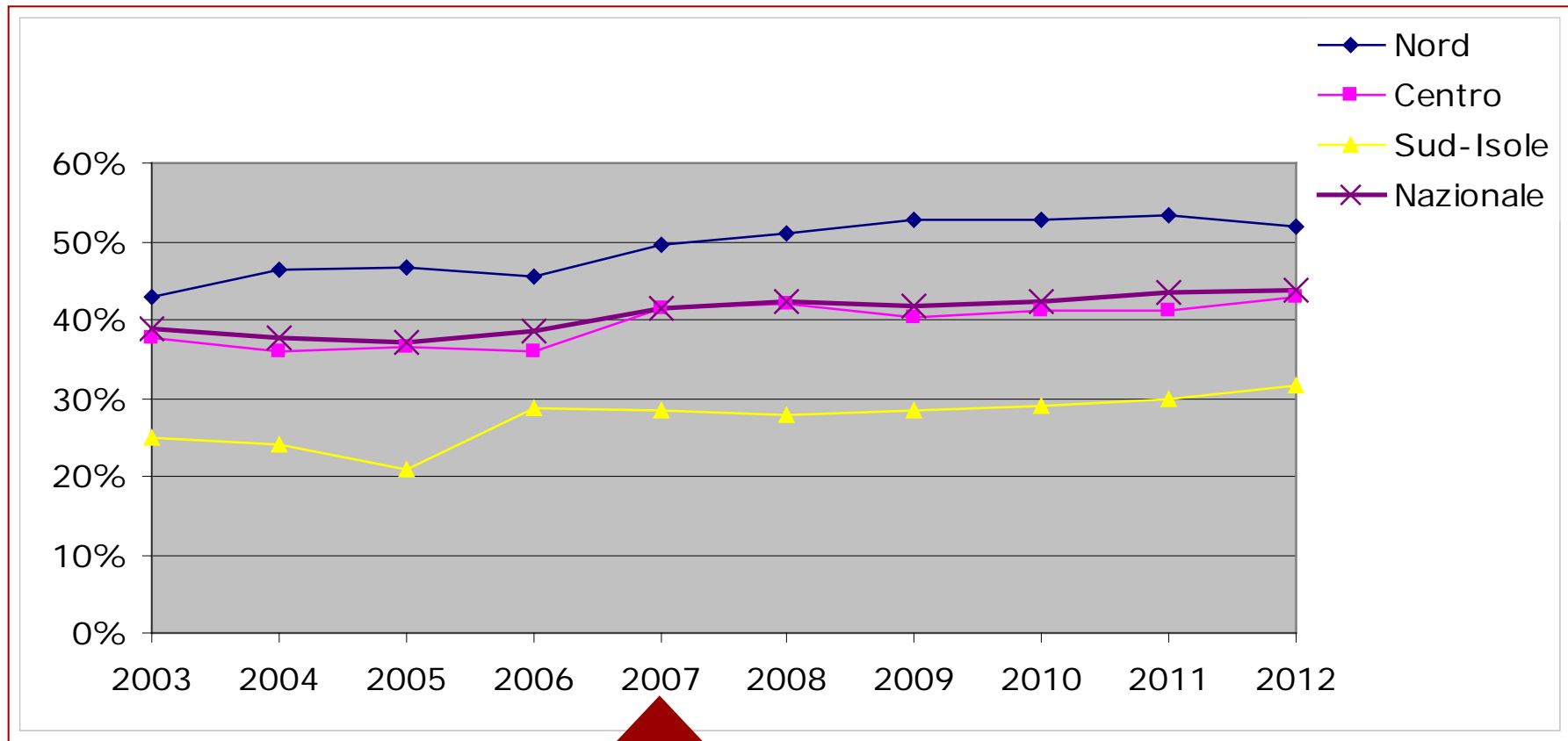
# Gestione delle liste anagrafiche



# Comunicazione donna-screening

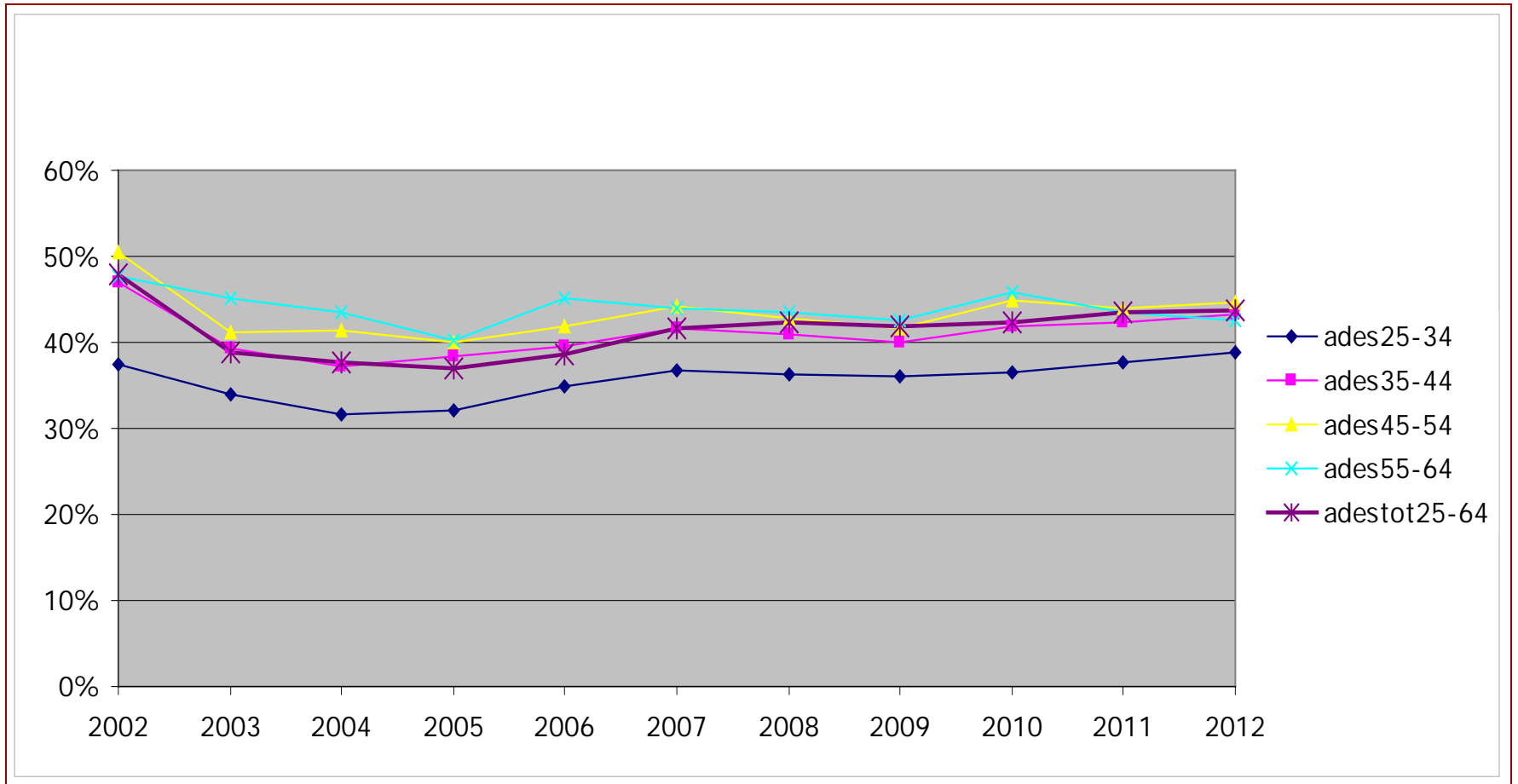


# Adesione all'invito per macroarea



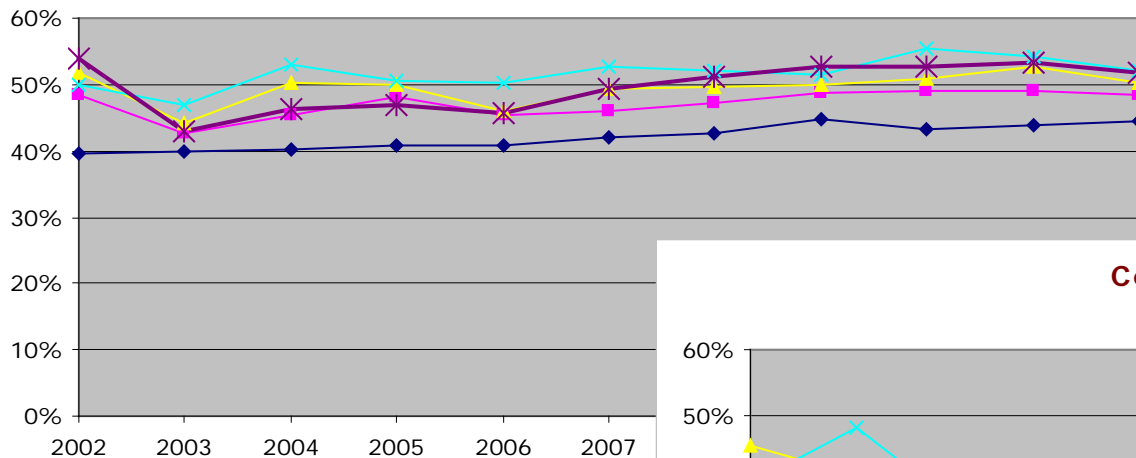
Correzione per inesitati

# Adesione all'invito per età

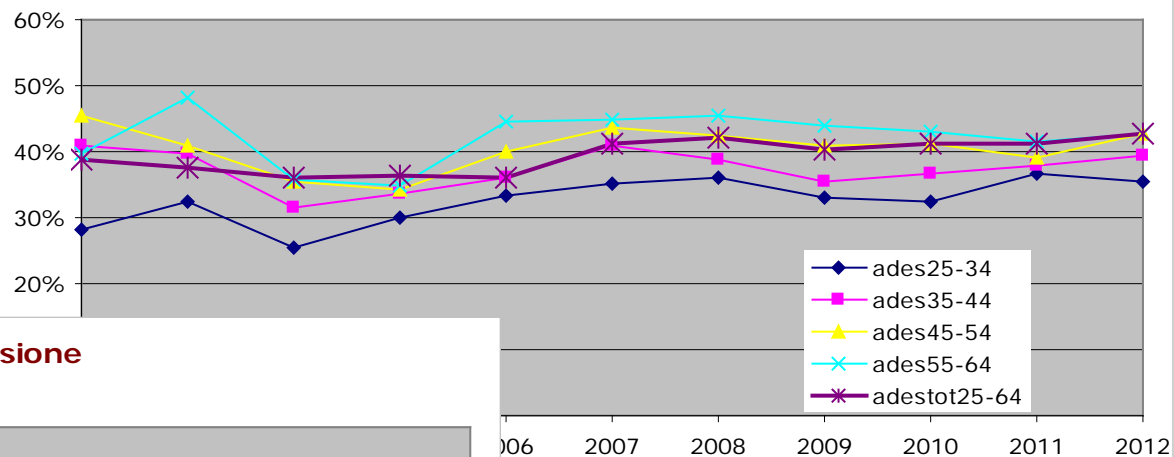


# Adesione all'invito per età e macroarea

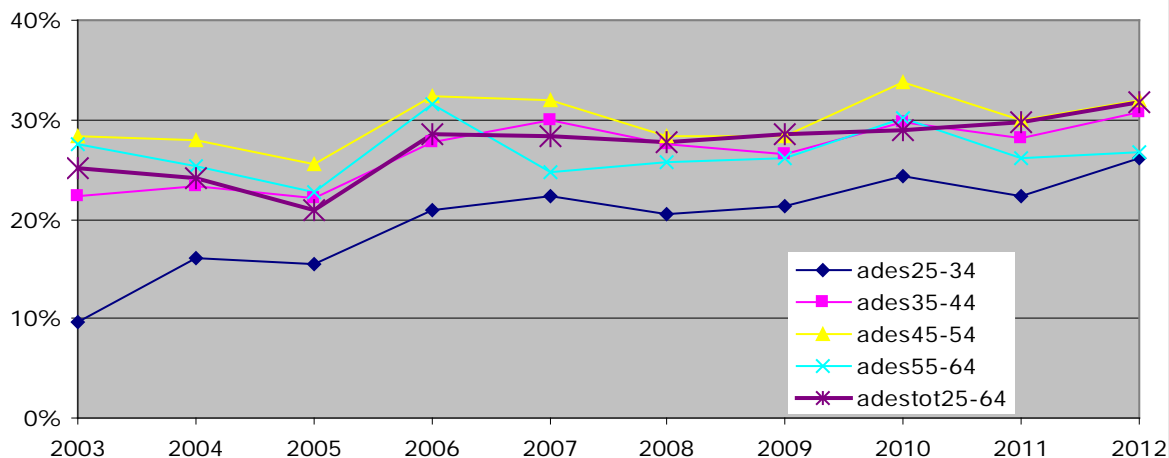
## Nord - adesione



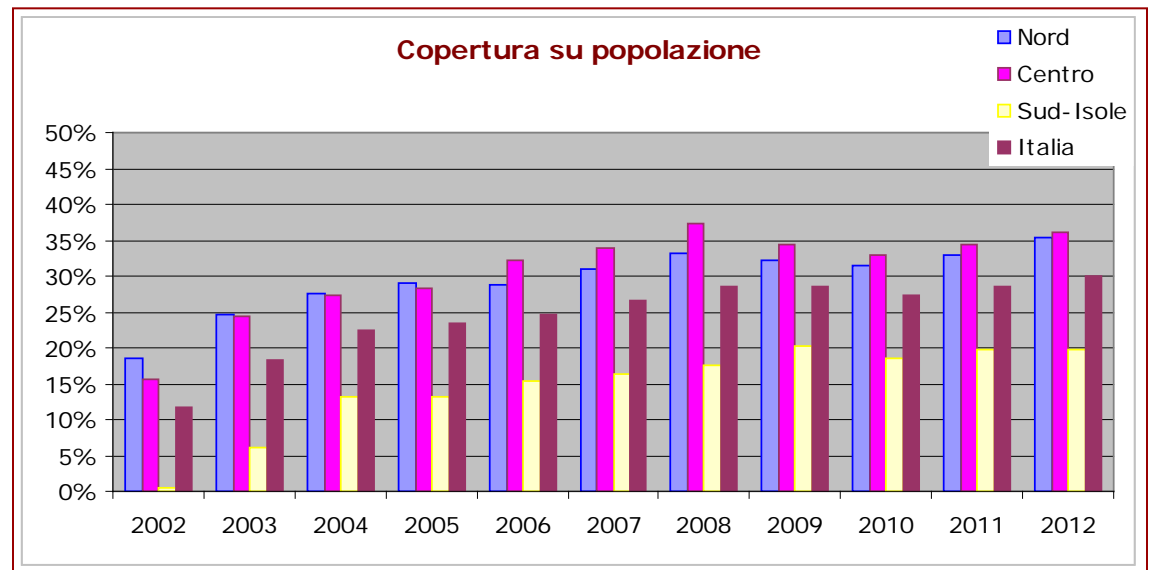
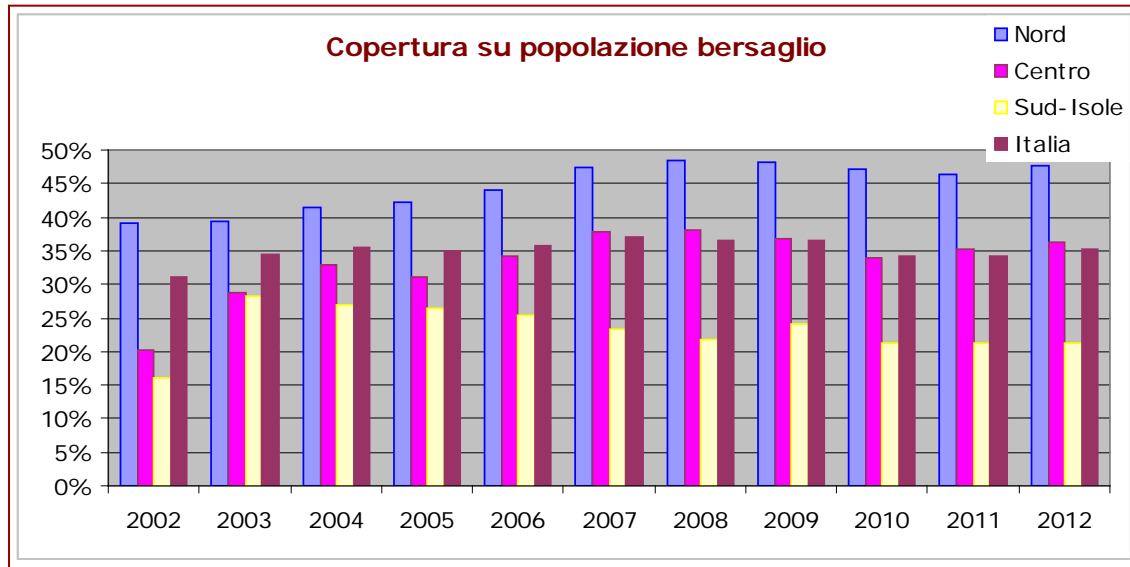
## Centro - adesione



## Sud e Isole - adesione



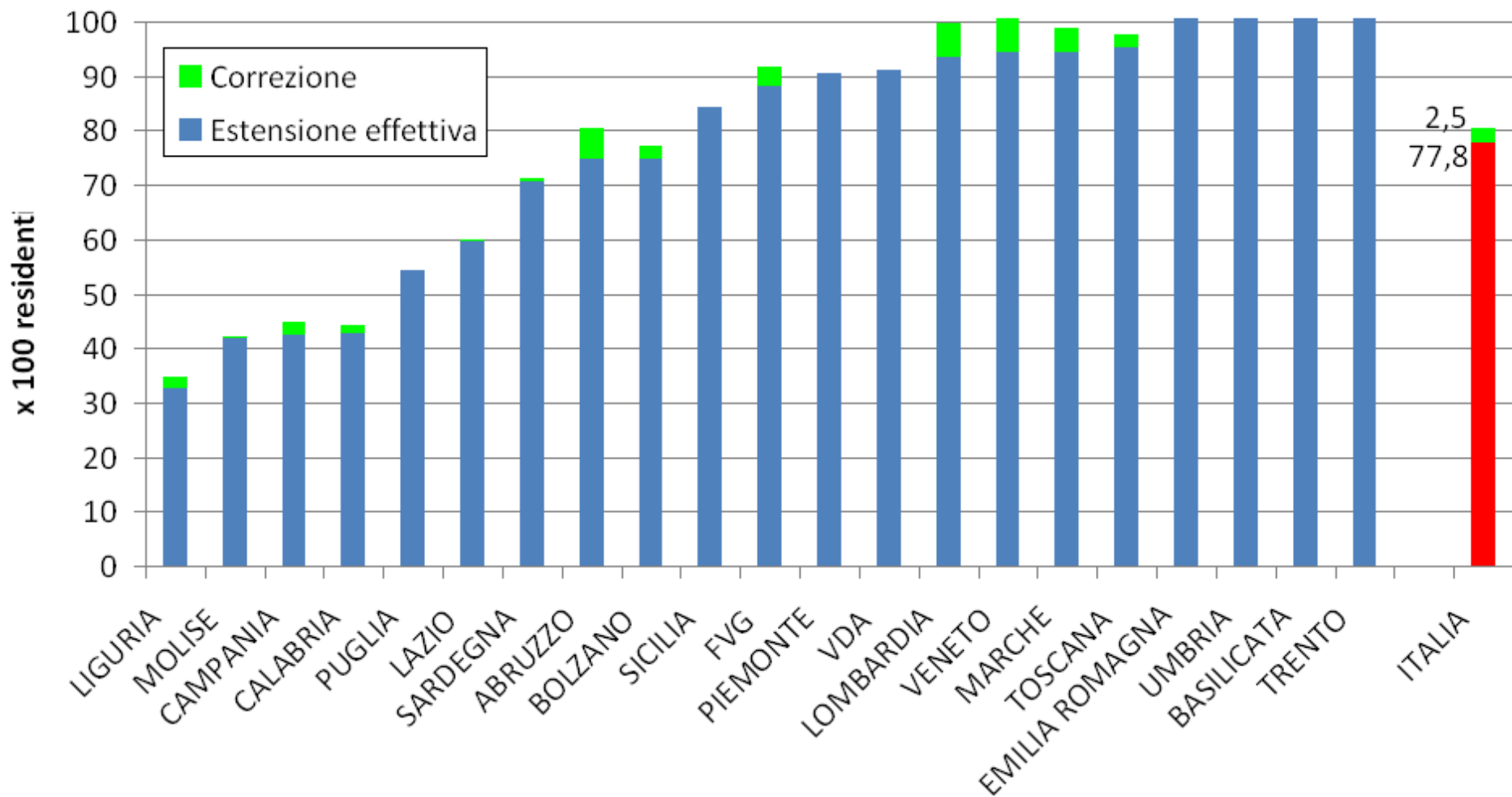
# Copertura del test per macroarea



Un sincero ringraziamento a

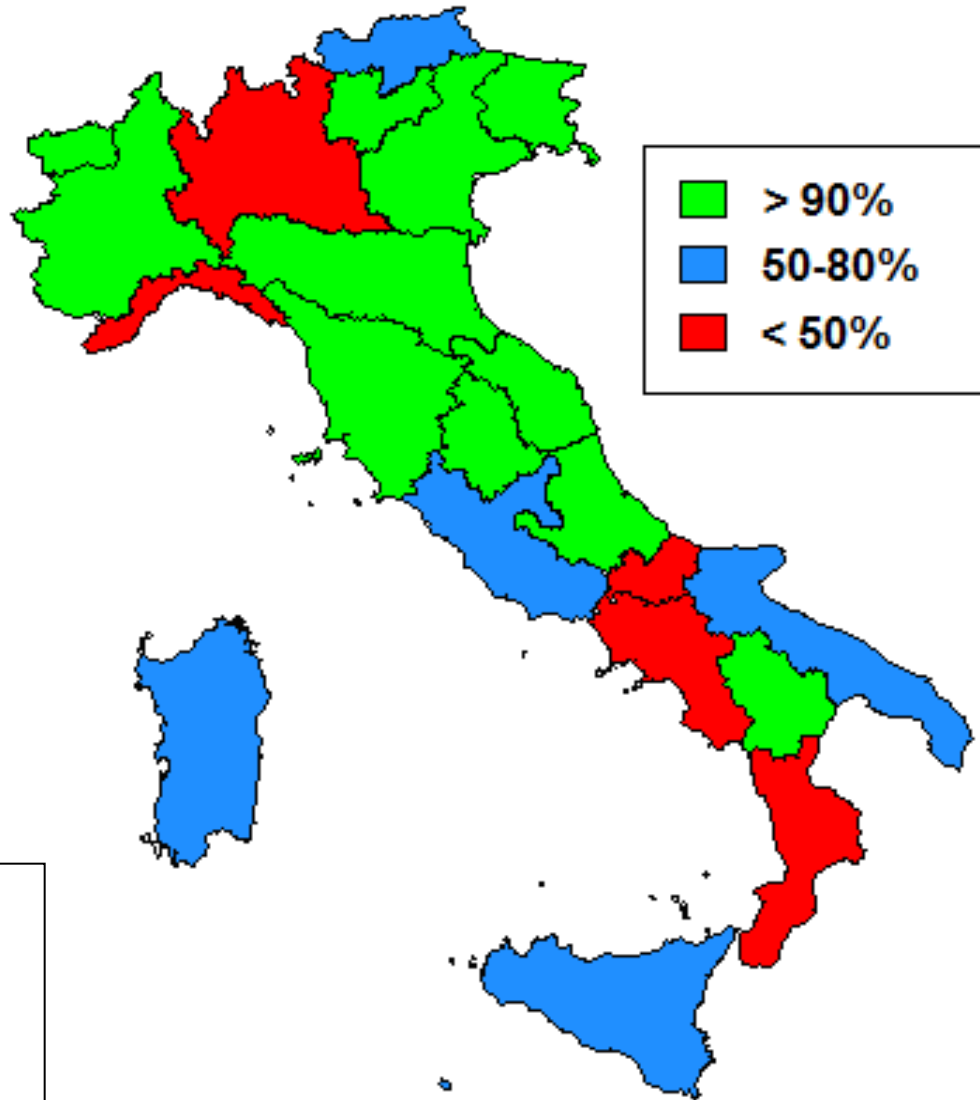
Pamela Giubílato e Mimmo Ronco

## Estensione effettiva corretta 2012





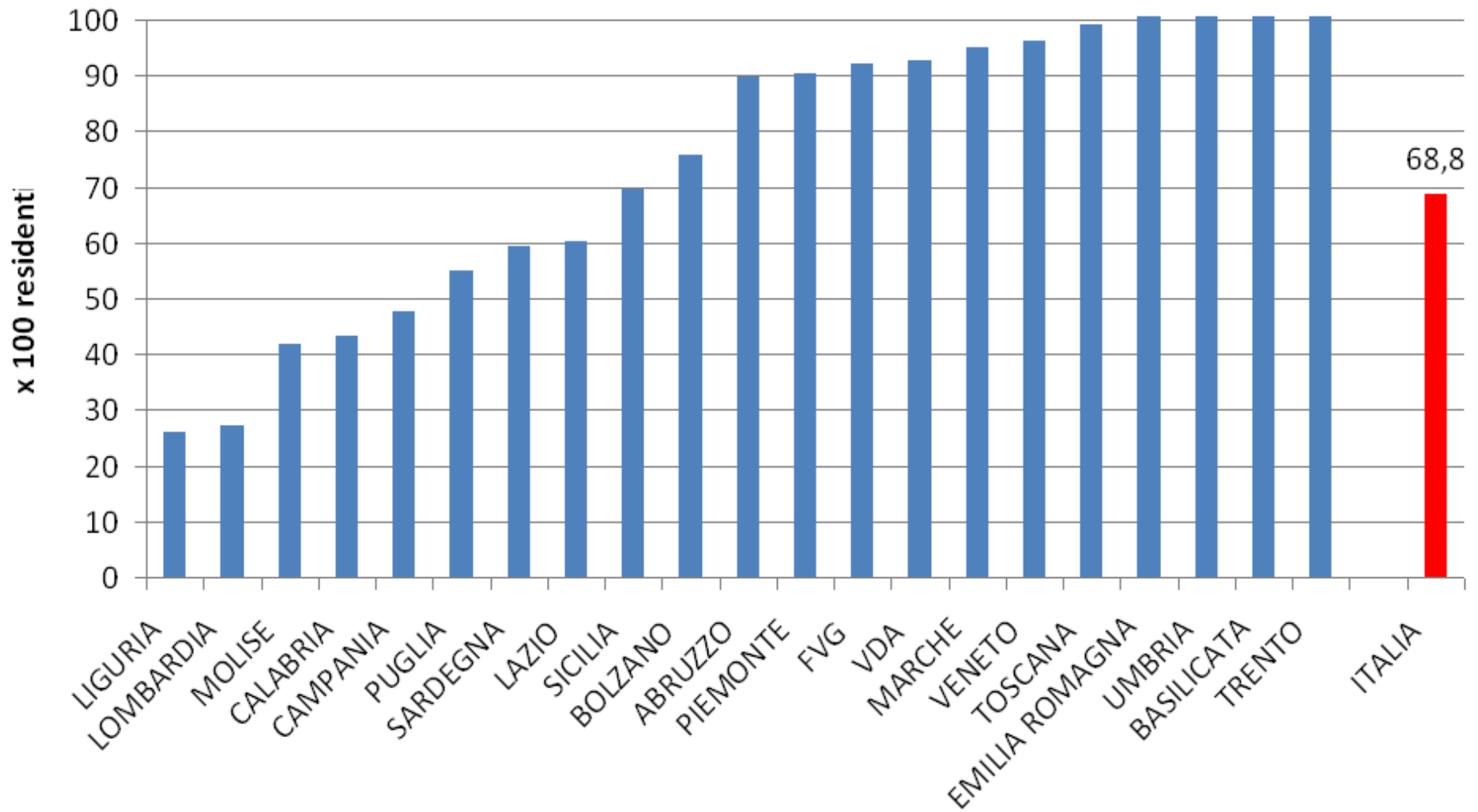
# Estensione inviti su popolazione - 2012



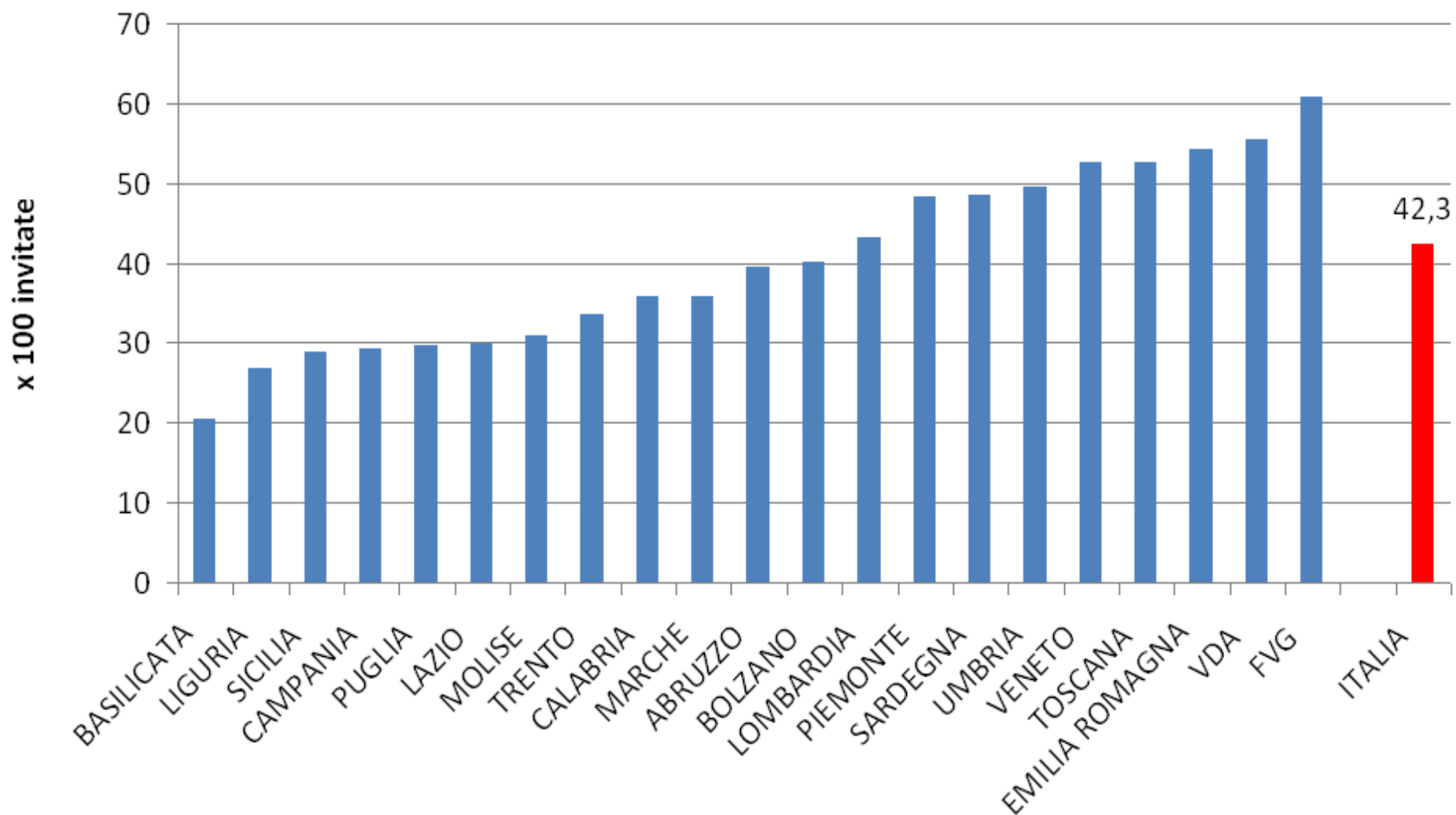
ITALIA 2012

**68,8%**

## Estensione inviti su ISTAT 2012



## Adesione grezza 2012



## Adesione corretta 2012

