

Convegno Nazionale GISCI 2015

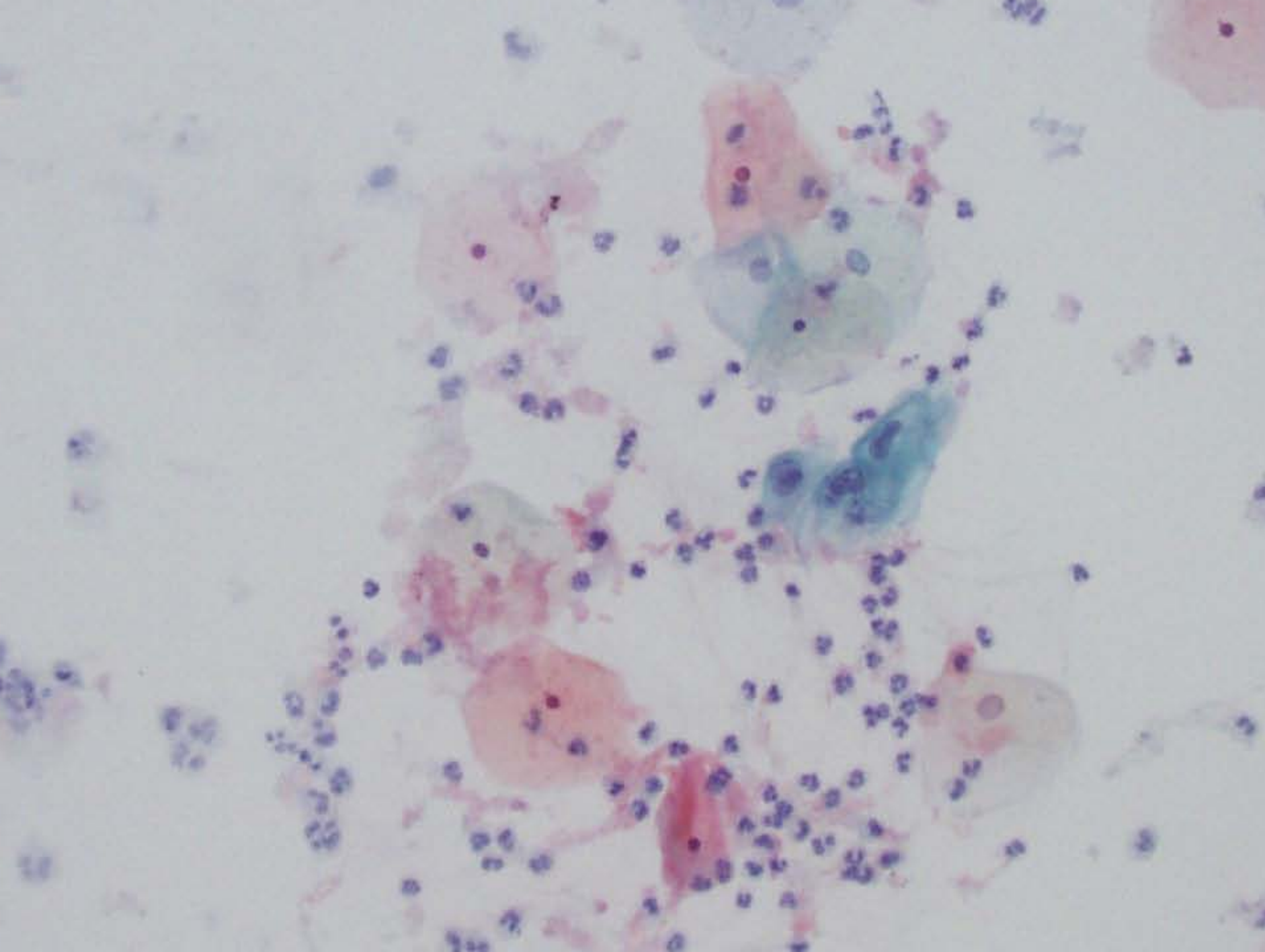


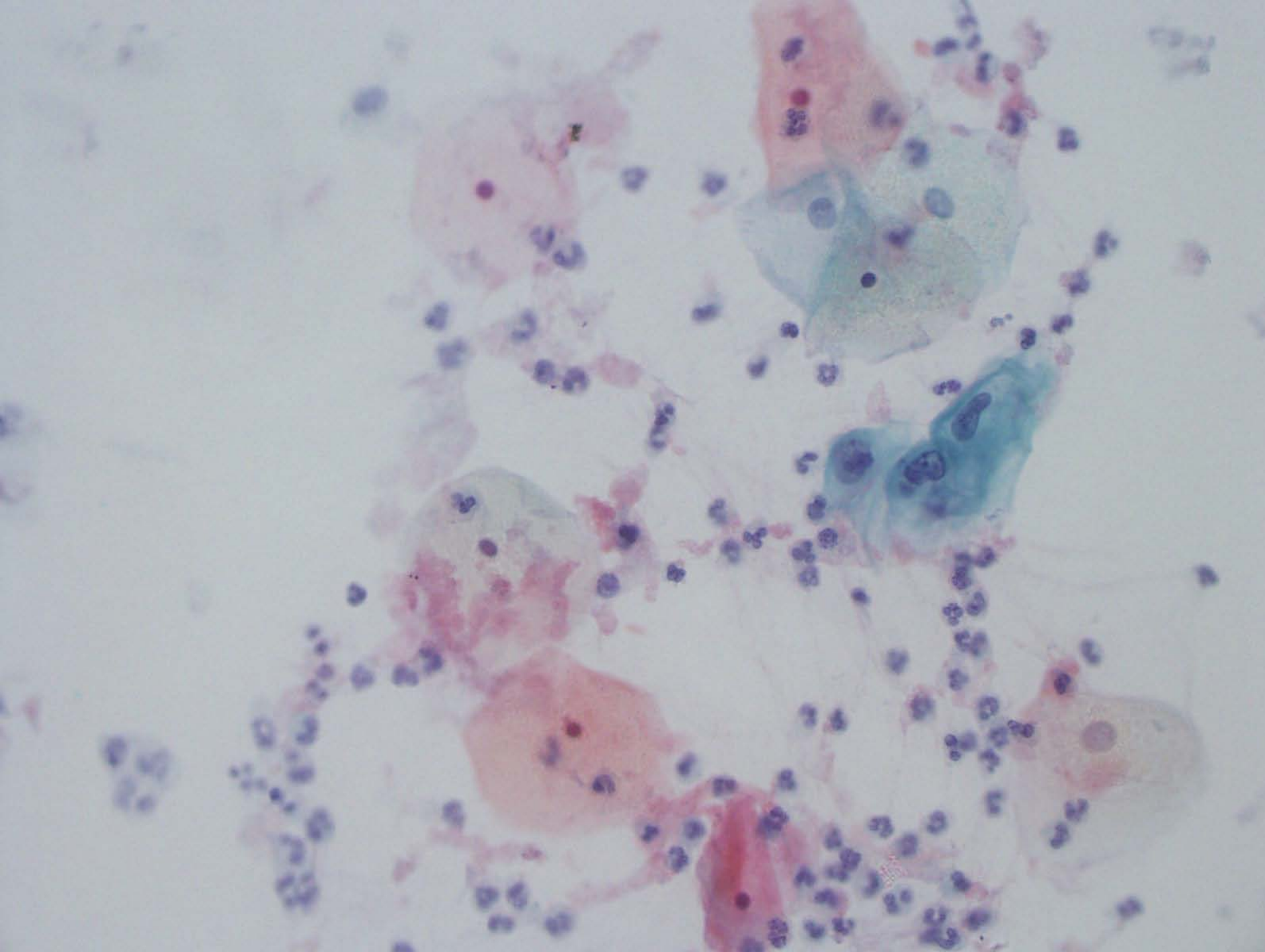
*Workshop Precongressuale
Primo livello citologia di triage
Lesioni CIN2+ in pap test di triage negativi*

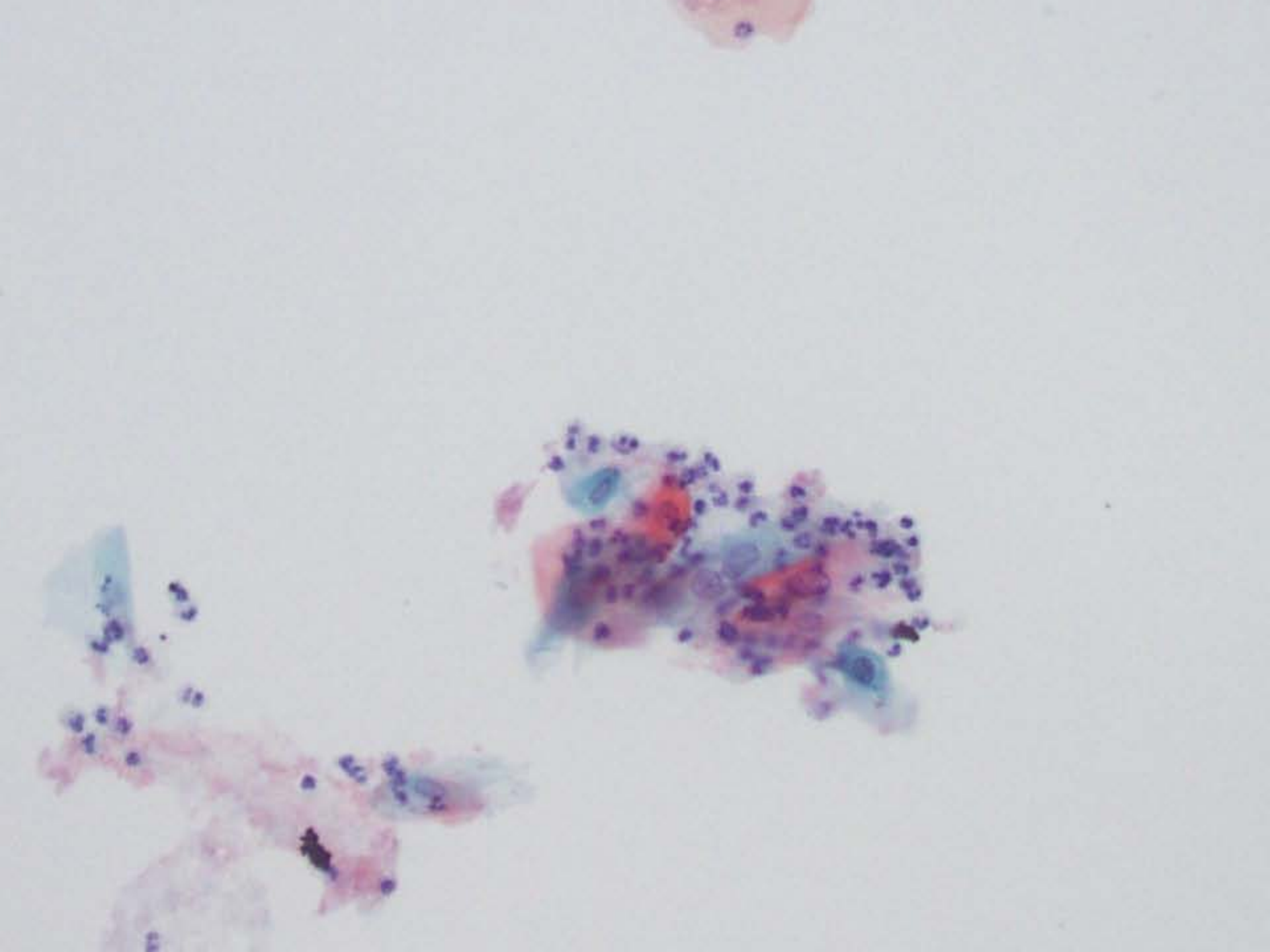
CASO 1

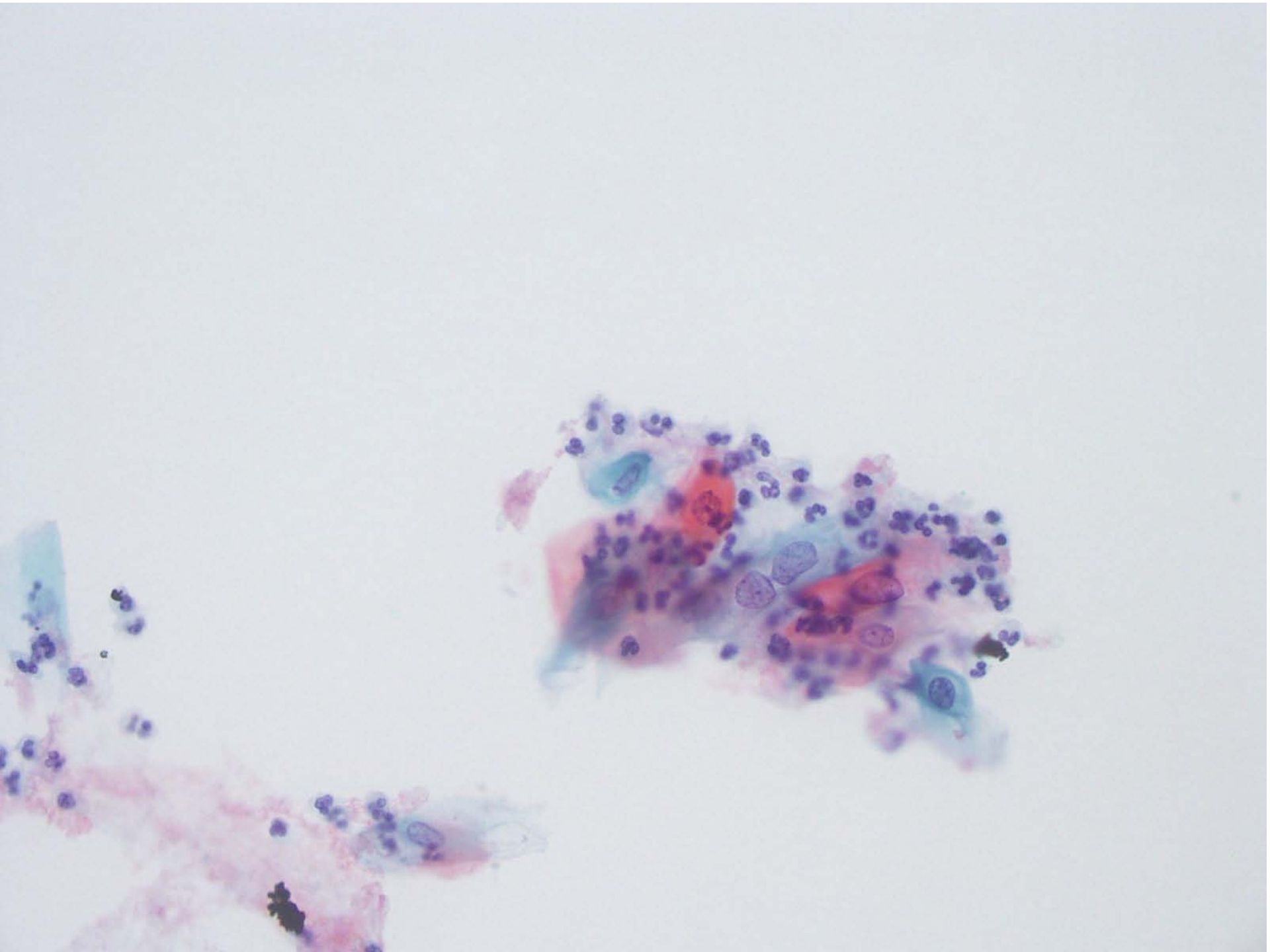
Storia di screening

- Vetrino n. 143716
- Donna di 46 aa
- Hpv primario : presenti altri HPV-HR
- Triage: negativo
- P16 positiva
- Hpv a 12 mesi : presenti altri HPV-HR
- Colposcopia: G1
- Pap di follow up: negativo
- Biopsia : CIN 2

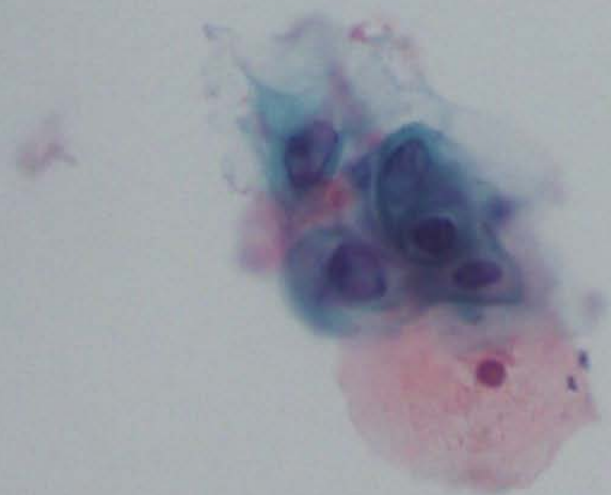


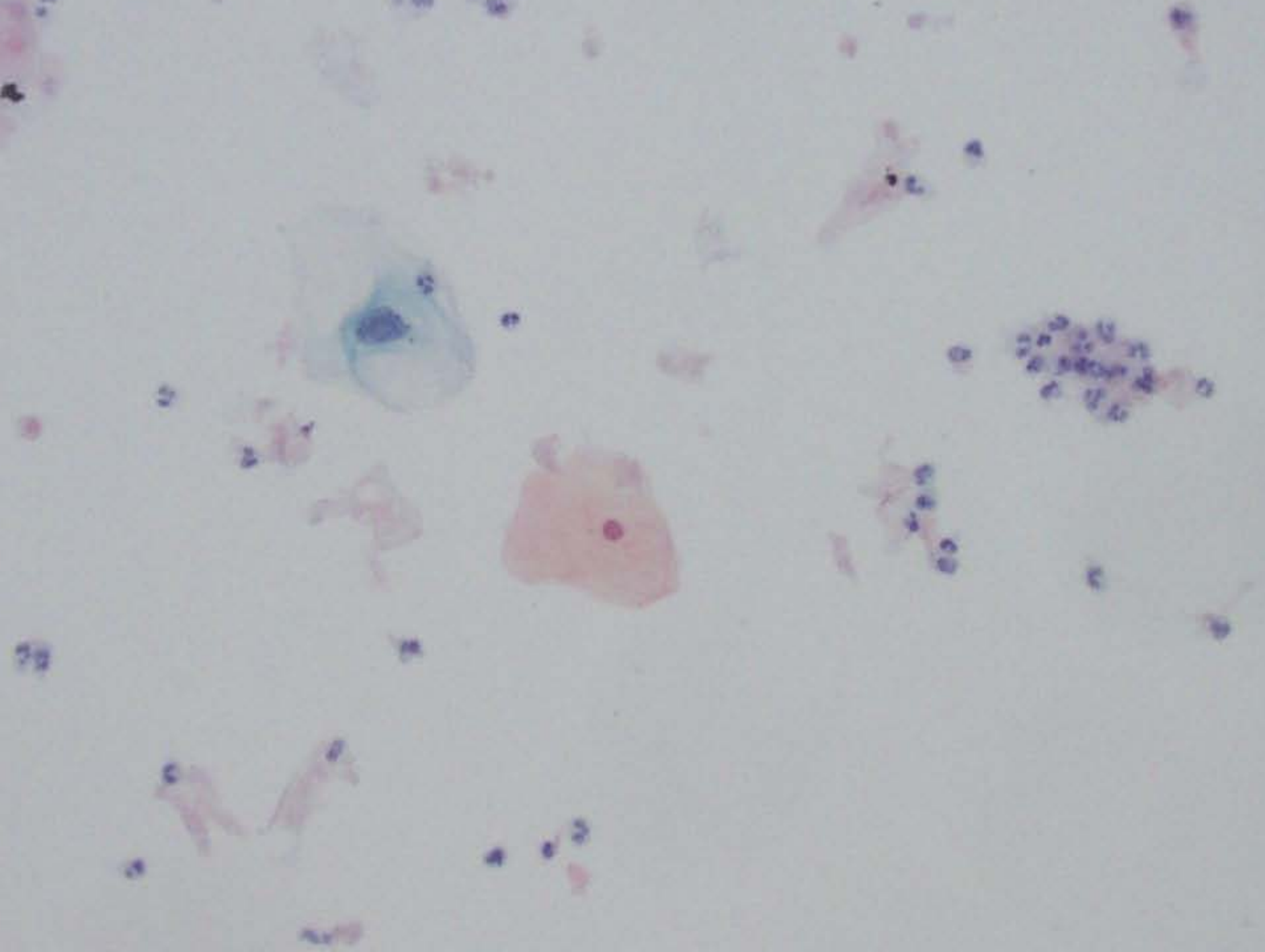














CASO 2

Storia di screening

- Vetrino n. 139913
- Donna di 40 aa
- Hpv primario : presenti altri HPV-HR
- Triage: negativo
- P16 positiva
- Hpv a 12 mesi : presenti altri HPV-HR
- Colposcopia: G1
- Pap di follow up: L SIL
- Biopsia : CIN 2

