

Rischio di CIN2+ nelle donne non aderenti all'invio del programma di screening e che hanno effettuato l'autoprelievo: risultati da un trial multicentrico

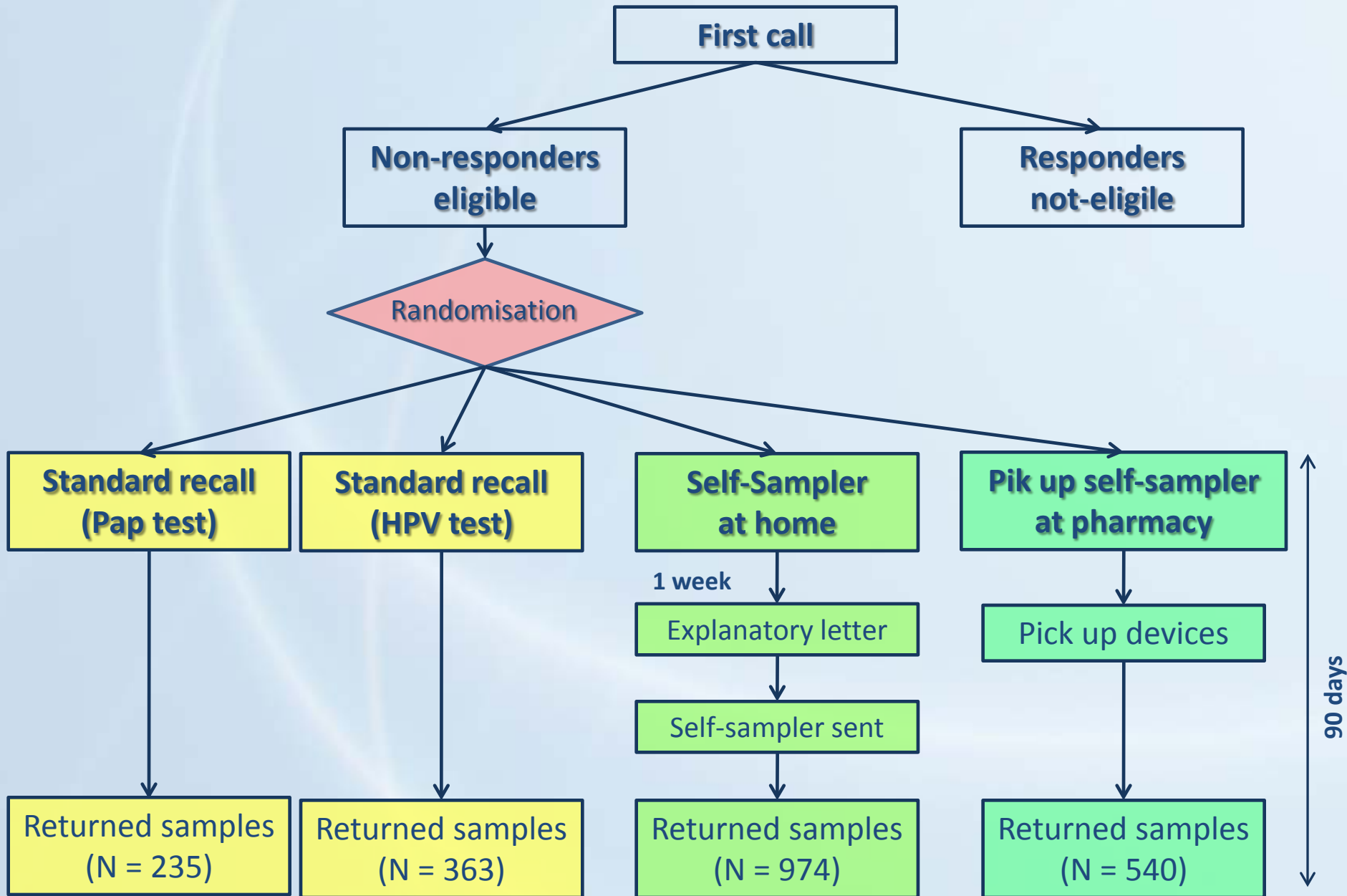
SARA BOVERI

Unitá di Ginecologia Preventiva
Istituto Europeo di Oncologia, Milano
Finalborgo, 22 Maggio 2015

Lo Screening in Italia

- In Italia i programmi di screening prevedono l'esecuzione di un pap test ogni tre anni tra i 25 ed i 64 anni.
- L'organizzazione degli screening oncologici è stata demandata alle regioni.
- In Italia nel 2012 si ha avuto una aderenza globale del 41% (osservatorio nazionale dello screening)

Flow chart



Risultati

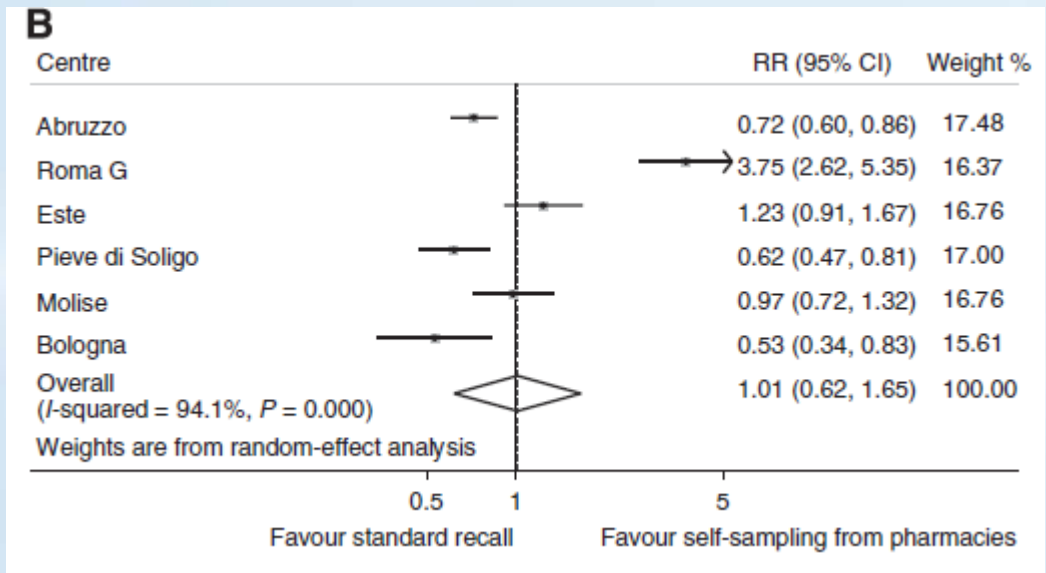
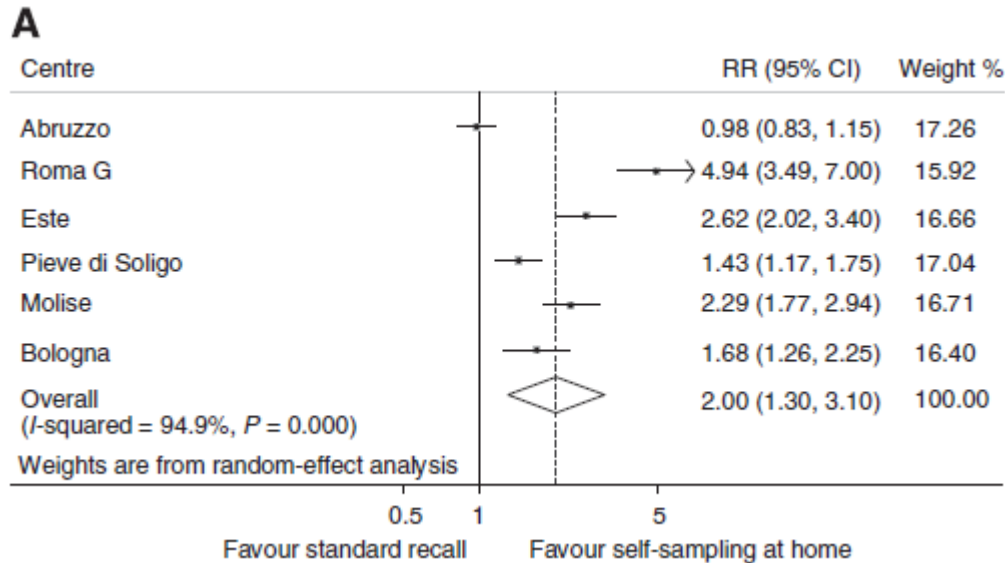
- Totale di donne arruolate: 14041

Table 2. Results of participation, by arm and age group

	Test at clinic			Self-sampling at home			Self-sampling pharmacy			Self-sampling at home		Self-sampling pharmacy	
	Invited	Participants		Invited	Participants		Invited	Participants		RR	CI (95%)	RR	CI (95%)
	N	N	%	N	N	%	N	N	%				
<39	1112	134	12.1	1029	271	26.3	964	129	13.4	2.19	1.77-2.71	1.11	0.87-1.42
40-49	1762	222	12.6	1590	345	21.7	1681	221	13.1	1.72	1.45-2.05	1.04	0.86-1.26
50-59	1548	189	12.2	1403	285	20.3	1347	144	10.7	1.66	1.38-2.01	0.88	0.70-1.10
60+	590	53	9.0	494	73	14.8	521	46	8.8	1.64	1.14-2.39	0.98	0.65-1.49
Total	5012	598	11.9	4516	974	21.6	4513	540	12.0	1.82	1.63-2.00	1.01	0.90-1.13

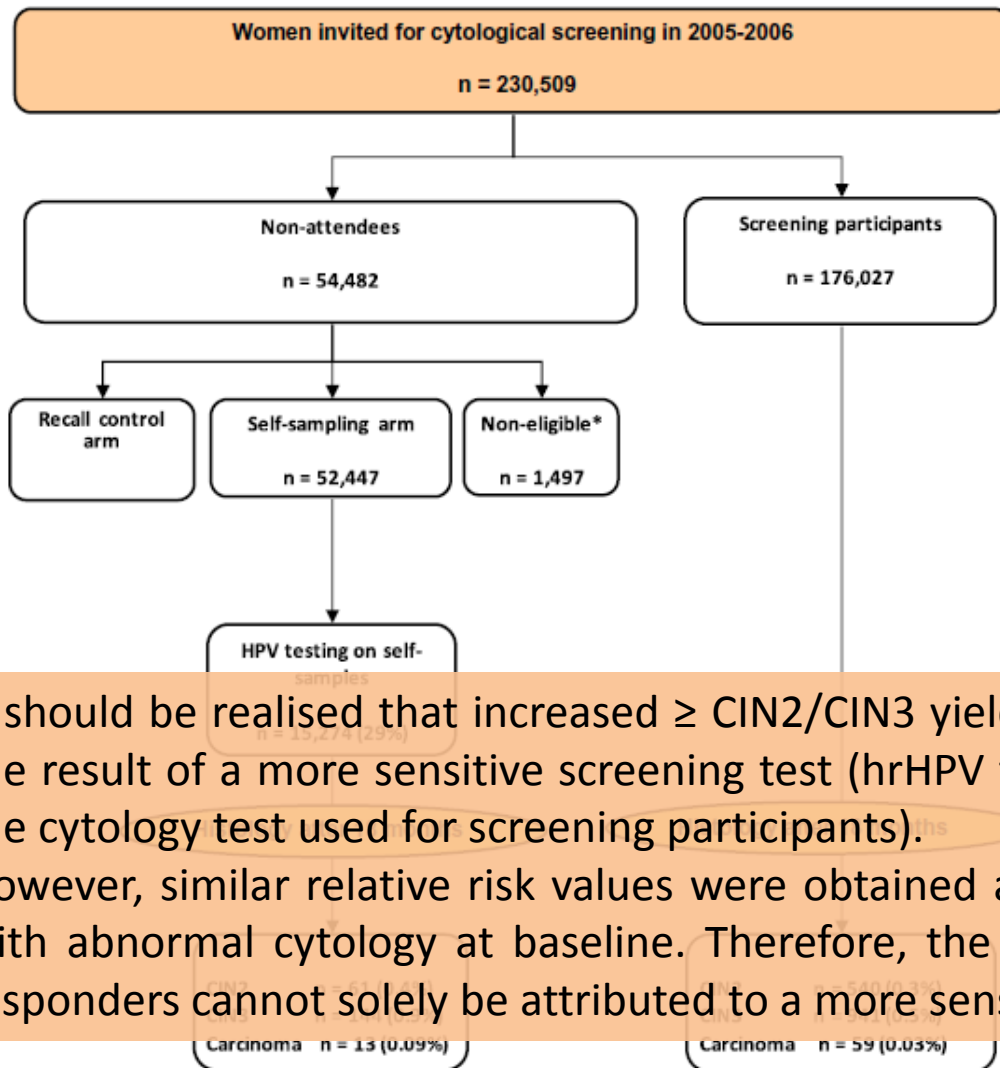
- 12.4% di HPV test positivi globalmente
- 1/3 delle donne positive non hanno completato il follow-up
- 2 casi di CIN2+ nel braccio self-sampling e 2 casi CIN2+ nel braccio pap test

Risultati (2)



Offering self-sampling for human papillomavirus testing to non-attendees of the cervical screening programme: Characteristics of the responders

Murat Gök ^a, Daniëlle A.M. Heideman ^a, Folkert J. van Kemenade ^a, Anton L.M. de Vries ^b, Johannes Berkhof ^b, Lawrence Rozendaal ^a, Jeroen A.M. Beliën ^a, Lucy Overbeek ^c, Milena Babović ^d, Peter J.F. Snijders ^a, Chris J.L.M. Meijer ^{a,*}

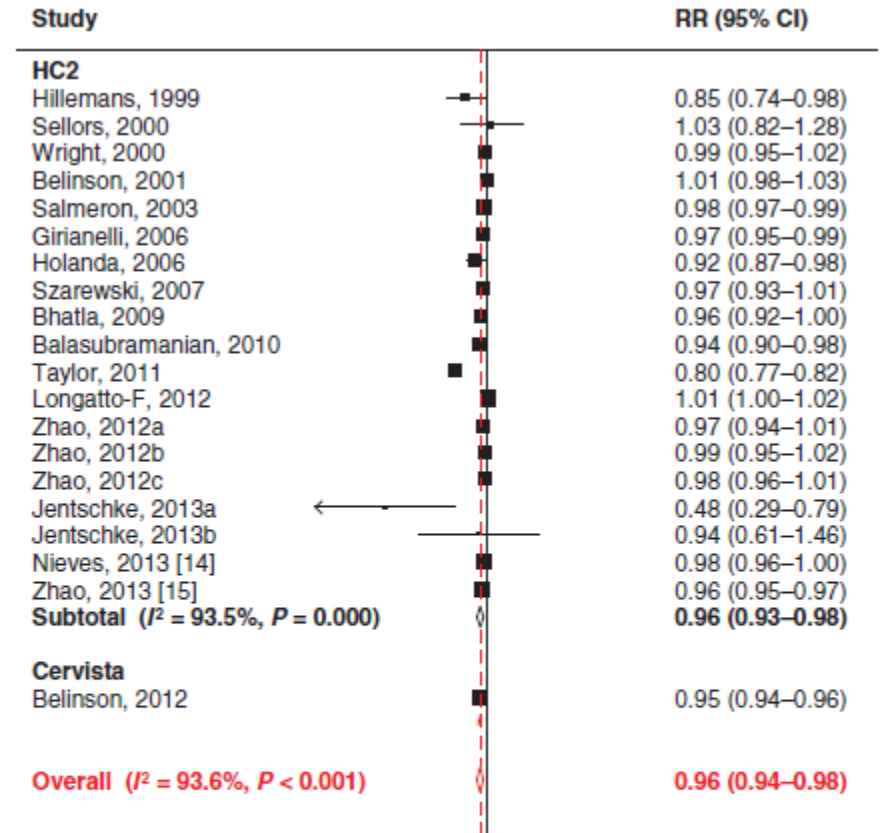
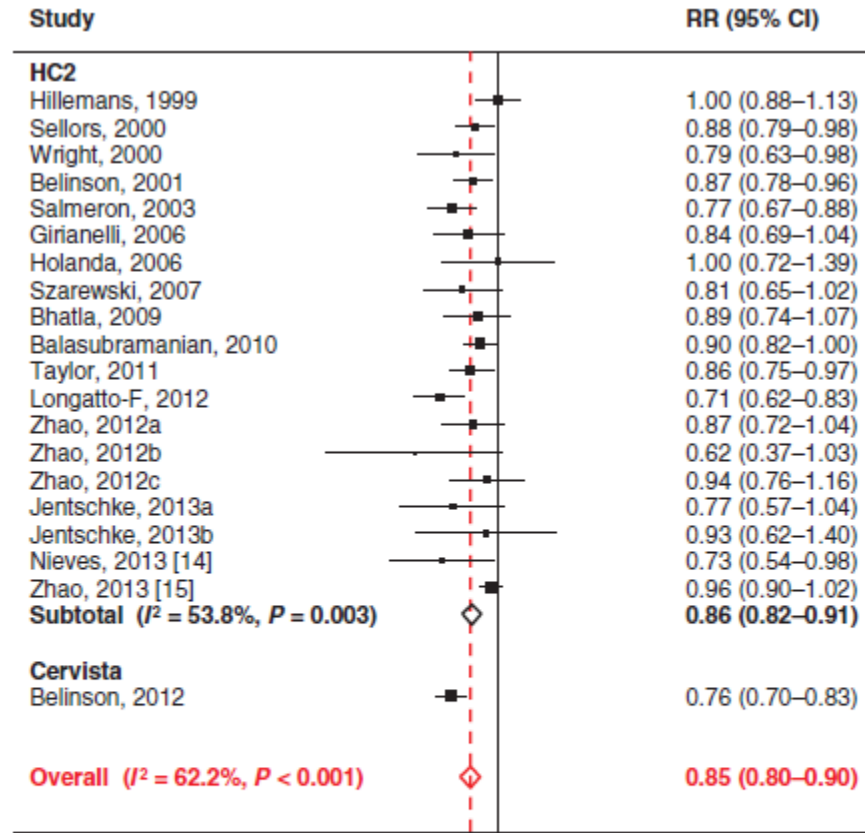


It should be realised that increased \geq CIN2/CIN3 yield in self-sampling responders might be the result of a more sensitive screening test (hrHPV test used in self-sampling compared to the cytology test used for screening participants).

However, similar relative risk values were obtained after restricting the analysis to women with abnormal cytology at baseline. Therefore, the increased relative risk of self-sampling responders cannot solely be attributed to a more sensitive screening test.

Offering Self-Sampling Kits for HPV Testing to Reach Women Who Do Not Attend in the Regular Cervical Cancer Screening Program

Marc Arbyn¹ and Philip E. Castle^{2,3}



In conclusion, with the adoption of hrHPV testing for primary cervical cancer screening, self-sampling could be used to increase the participation of high-risk nonattendees in the cervical cancer screening program and thereby increase the effectiveness of the overall program.

Conclusioni

- Il self-sampling aumenta l'adesione al programma di screening, specialmente nelle giovani donne
- Migliore risposta nel braccio con invio a casa rispetto al ritiro in farmacia
- Maggiore tasso di positività all'HPV paragonabile ad altri studi europei sembra associato a una minore specificità
- Nessun riscontro di un aumento della detection rate di CIN2+: non sembra una popolazione a rischio aumentato
- Scarsa adesione al follow-up programmato sia con pap test che con colposcopia

Ringrazio l'HPV self-sampling Italian Working Group

